



# NORTHERN MARINE 84

\$ 2 000 000

YEAR: 2011 LOCATION: MONTENEGRO VAT NOT PAID

## TECHNICAL CHARACTERISTICS

Length	25.76 m	Fuel tank	26 500 l
Beam	6.51 m	Water tank	3785 l
Draft	2.29 m	Cabins	3+1
Displacement	120 t	Berths	6+2
Hull	GRP	Flag	Cayman Islands
Engines	Caterpillar 3406E	-	-
Engine power	1 x 550HP	-	-
Engine hours	5920		
Max. speed	12 kn		

# NORTHERN MARINE 84

\$ 2 000 000 2011 MONTENEGRO



## SPECIFICATION

### NAVIGATION EQUIPMENT

- Second 16" color multifunction display mounted in the lower helm
- Garmin remote control panel in lower helm
- Garmin GMI20 4" multifunctional display in the lower helm station (for separate display and control of individual functions such as log and echo sounder)
- Garmin remote control panel in top helm
- Garmin GMI20 4" multifunctional display in the top helm (for separate display and control of individual functions such as log and echo sounder)
- Hunter toilets
- Makore cherry interior
- Flat screen TV's through-out the yacht
- Entertainment systems through-out the yacht
- Custom leather furnishings
- On Deck owners suite
- Large galley & formal dining
- Day head
- Media room on bridge deck
- 4 staterooms w/ensuite heads
- Utility room

### Galley

- Jenn-Air 4 burner ceramic top w/oven
- Corain countertops
- Breakfast bar w/(3) stools
- (2) SubZero refrigerators with freezer drawers. (1) 700TR & (1) 700TC with built-in icemaker
- Sharp Carousel convection microwave oven
- Kitchen Aid s.S double sink
- Kitchen Aid trash compactor
- Kitchen Aid garbage disposal
- Cherry wood cabinetry

### Electronics

- (4) NautiComp Infinity Series Color 19" LCD Navigation screens.
- Simrad/Nobeltec "InSight-2 Radar
- Furuno GP-37 DGPS Navigator
- Furuno GP-32 GPS
- Simrad Autopilot
- (2) I-Corn M602 VHF radios
- Interphase sonar PC/View 180
- FLIR infrared camera
- KVH Tracphone F33
- KVH Tracvision 6 satellite -TV receiver
- Simrad R135 rudder angle indicator
- Simrad HS50 heading sensor
- Simrad IS15 anemometer
- Simrad FU50 & FU25 Steering levers
- Simrad RC25 Rate compass
- Nobeltec Dongle - Nobeltec security software
- Panasonic phone system

### Flybridge:

- Command Mic handheld VHF
- (2) Simrad LCD Navigation monitors
- Autopilot remote
- Bow & Stern thruster controls
- IS15 display
- Rudder angle indicator

### Electrical System

- Phase Three Mdl. PT-24-95F 3 stage battery charger
- Peeping Tom EXC530 camera system: revolving lens, (1) aft deck, (1) flybridge arch.
- Halogen DC lighting
- Ac/DC lighting for engine room & machinery spaces
- Xantrex 4000 watt inverter/charger
- Prosine 1800 watt inverter/charger
- (10) 8D AGM batteries
- 100 Amp shorepower service
- Glendinning 100amp CM8 cablemaster system
- Charles C-Power ISO BOOST 100
- Panasonic phone system
- Charles "Smartwise" 100amp shorepower cable splitter
- 

### Mechanical

- ZF mdl ZFW350 transmission 3.988-1 ratio
- Main Eng. Hydraulic pump 7.94+CID
- Gen Hydraulic pump 2.83+CID
- Auxiliary "Get Home" drive
- Racor 75-900FG duplex fuel/water separator filtration system-main engine
- Racor 230R fuel filters for generators
- Fuel transfer system 17gpm w/Centurion filters
- Reverso oil changing system
- Lube Oil tank 30 gallons
- Trac stabilizing system w/16SF fins & winglets
- Amercian Bow Thruster system:
- Bow 16"D w/55HP hyd. motor
- Stern 16"D w/55HP hyd. motor
- Racor/Parker Air/Silencer eng filter 1600CFM
- 80 gal. hotwater capacity
- Main shaft seal: PSS dripless
- (2) Sea Chests
- FireBoy halon system
- DeWalt Emglo air compressor
- Work bench w/Craftsman toolchest
- Fuel tank room fwd of guest strms
- Aqua-Air 12 ton chilled water marine Air/Heat system
- 125 gal.Gray water holding tank
- 175 gal. Black water holding tank
- (4) bilge pumps, (2) 3700GPH pumps in eng. room & aft mech. space
- Fwd & Aft watertight engine room access doors
- ZF engine controls; P/H, F/B & cockpit

### Deck

- (2) Annovi Reverberi Raw & freshwater pump systems
- SeaRecovery "Aqua Whisper" 1400gpd watermaker w/plankton filter, commercial pre-filter & water filter
- Hydraulic fluid resivior; 20gal. w/heat exchanger
- NMI fuel supply/return manifolds
- Freshwater washdowns
- Saltwater washdowns
- Navy blue Awlgrip hull
- Port aft cockpit windlass
- Steelhead 2500lb davit on boat deck
- Muir 6000 hydraulic windlass
- Bruce 80KG anchor w.400' chain & 100' rode

# NORTHERN MARINE 84

\$ 2 000 000 2011 MONTENEGRO



## EXTERIOR



# NORTHERN MARINE 84

\$ 2 000 000    2011    MONTENEGRO



## EXTERIOR

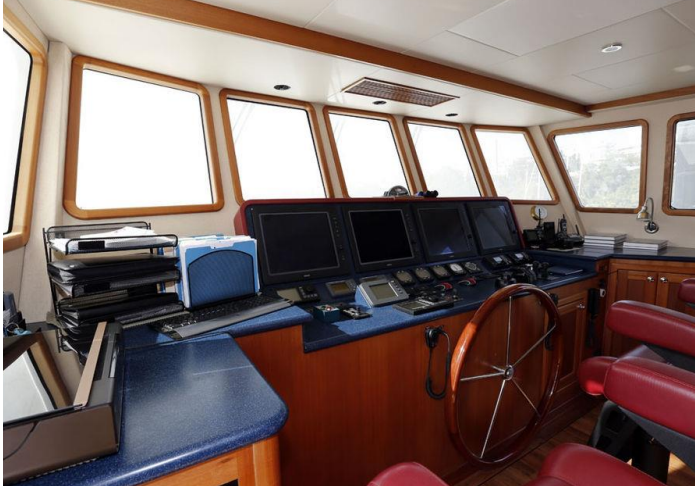


# NORTHERN MARINE 84

\$ 2 000 000    2011    MONTENEGRO



## INTERIOR

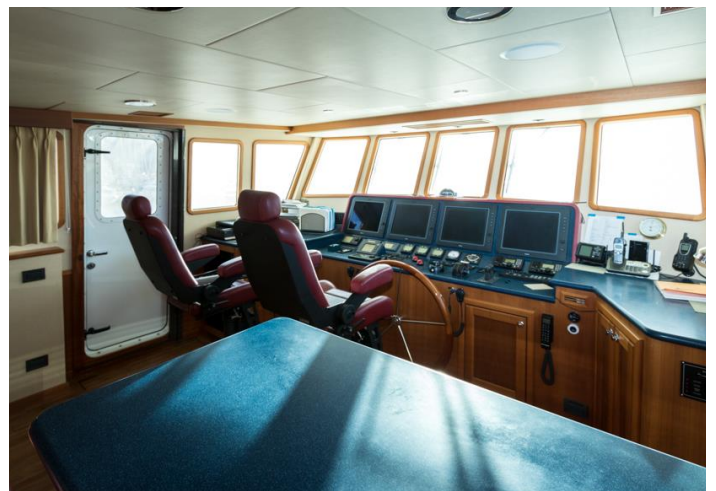
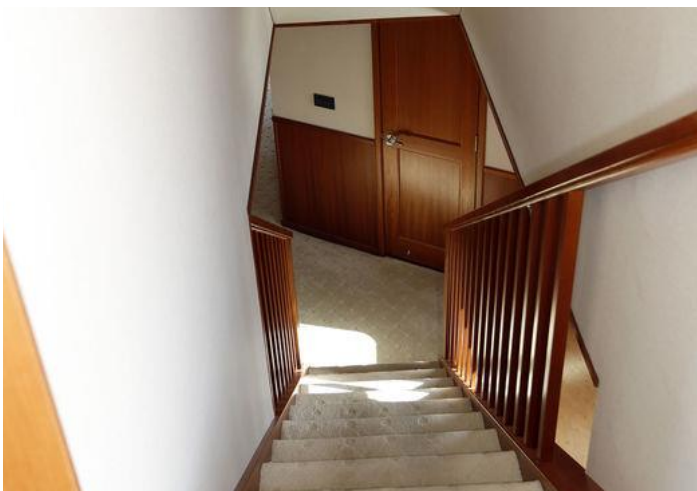


# NORTHERN MARINE 84

\$ 2 000 000    2011    MONTENEGRO



## INTERIOR



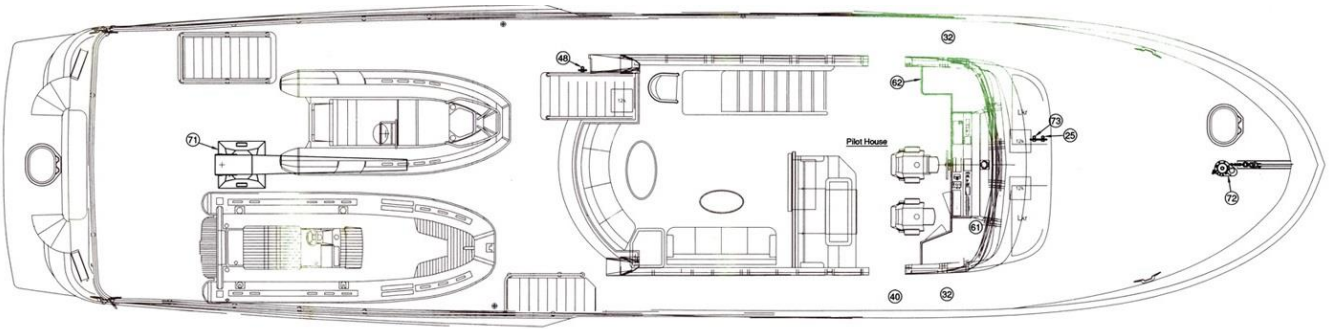
# NORTHERN MARINE 84

\$ 2 000 000 2011 MONTENEGRO

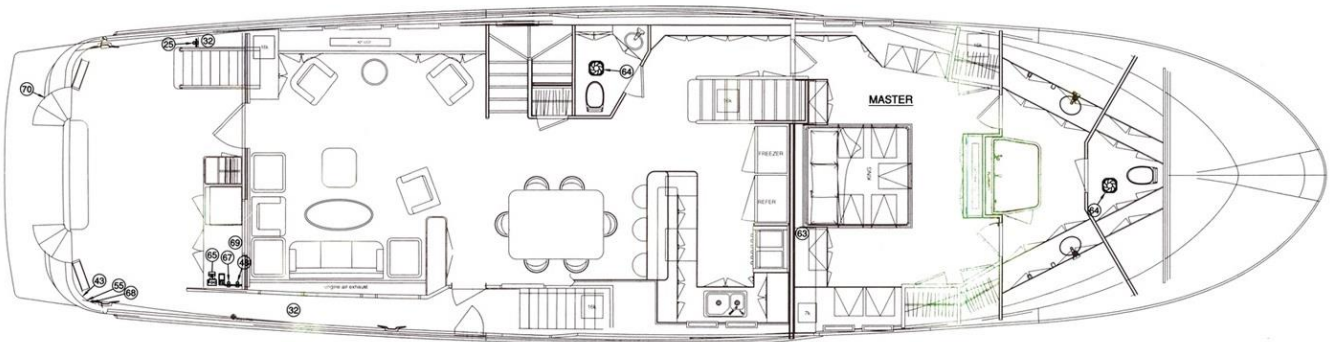


## LAYOUT

### FLYBRIDGE



### MAIN DECK



### LOW DECK

