



Cantiere Delle Marche RJ 115

35 M > 2026 > ITALY

CdM RJ 115

YACHTS FOR SALE

LOA:
35 m

YEAR:
late 2026

ASKING PRICE:
€ 17,350,000
EXCL. VAT

> ABOUT

With a “white yacht” and a sporty appearance, RJ is a vessel of the best class: built of steel and aluminum. the keel plate is 12 mm thick. independent steering wheels. advanced ship systems and backup pumps, a well-equipped navigation and communication complex, plenty of storage space on board, ocean crossing capabilities and flight range.

The crane is located on the sun deck aft, away from the entertainment area, and is hidden under a hydraulic opening hatch. It can lift a tender with a lifting capacity of up to 2 tons, a length of more than 6 meters and is located under it on the upper deck aft. this is invisible to the guests and hides from their view the mechanical part that would spoil the entertainment area.

Glass is one of the main elements of RJ's design. this, of course, helps to reduce the volume of the vessel and illuminate its interior. The side bulwarks along the aisle on the left and right sides are recessed and equipped with glass. As a final touch and evidence of the designer's attention to detail. the back of the sofa in the aft cockpit of the main deck has a glass niche that allows the guest sitting in front to enjoy the sea view.

The RJ boasts a second saloon, the size of which is comparable to the main saloon on the main deck. This plus is in no way comparable to other rooms on the same deck, which include a spacious aft cockpit and forward cabin, a day cabin, the captain's cabin and his special office, as well as the famous well-equipped and functional wheelhouse.

KEY FEATURES:

- Large spaces and excellent ergonomics
- Delivery in late 2026
- Official guarantee
- Italian design

CdM RJ 115

YACHTS FOR SALE

LOA:
35 m

YEAR:
late 2026

ASKING PRICE:
€ 17,350,000
EXCL. VAT

> SPECIFICATIONS

Type	Displacement motor yacht	Deck	Teak
Delivery	late 2026	Engines	2 x Caterpillar C18 800 HP
Location	Italy	Max. Speed	13.5 kn
LOA	35 m	Cruising speed	12 kn
Beam	7.50 m	Fuel tank	45 000 l
Draft	2.30 m	Water tank	6 000 l
Displacement	250 t	Range	5 000 nm at 10 kn
GT	130 GT	Guests	10 persons
Naval architecture	Cantiere Delle Marche	Crew	7 persons
Interior	Francesco Paszkowski	Guest accommodation	5 cabins: 1 x Double bed MASTER SUIT, 2 x Double bed VIP SUITS, 2 x Twin bedrooms with extra bed
Exterior	Francesco Paszkowski	Crew accommodation	4 cabins: 1 x captain cabin, 3 x twin bed crew cabins
Hull	Steel		
Superstructure	Aluminium		

The company is not responsible for the accuracy of the information provided by the Owner (images, yacht specification, list of installed equipment, its status, engine hours, legal issues). The engine hours are indicated at the time of placing information about the vessel on the site and are periodically updated in the future. Exact parameters and characteristics can be provided at the request of the buyer and are specified in the sales contract. All information provided regarding prices, condition, technical characteristics and / or the possibility of operating yachts on the water is for informational purposes and is not a public offer.







EXTERIOR



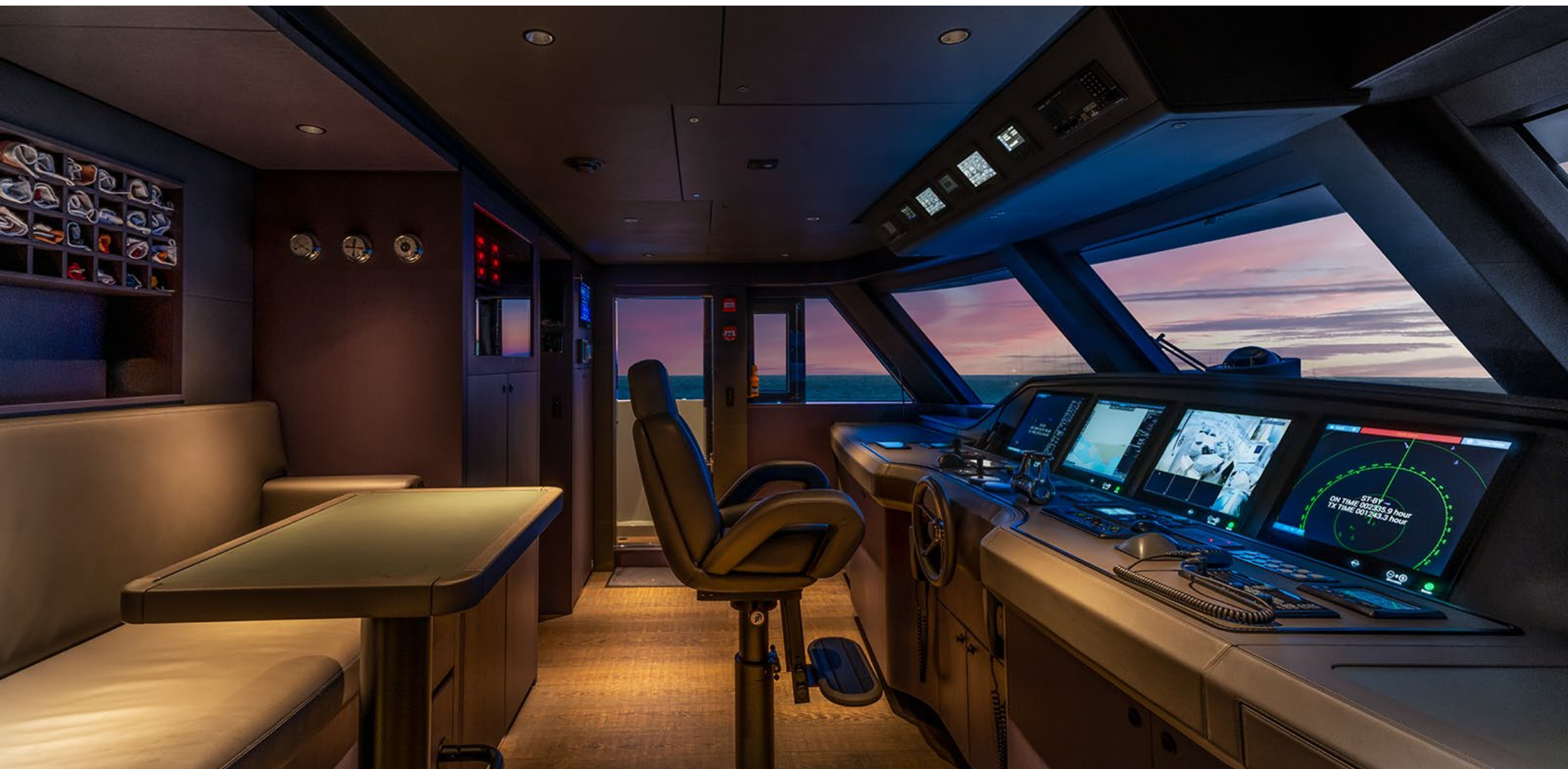
INTERIOR



SALON

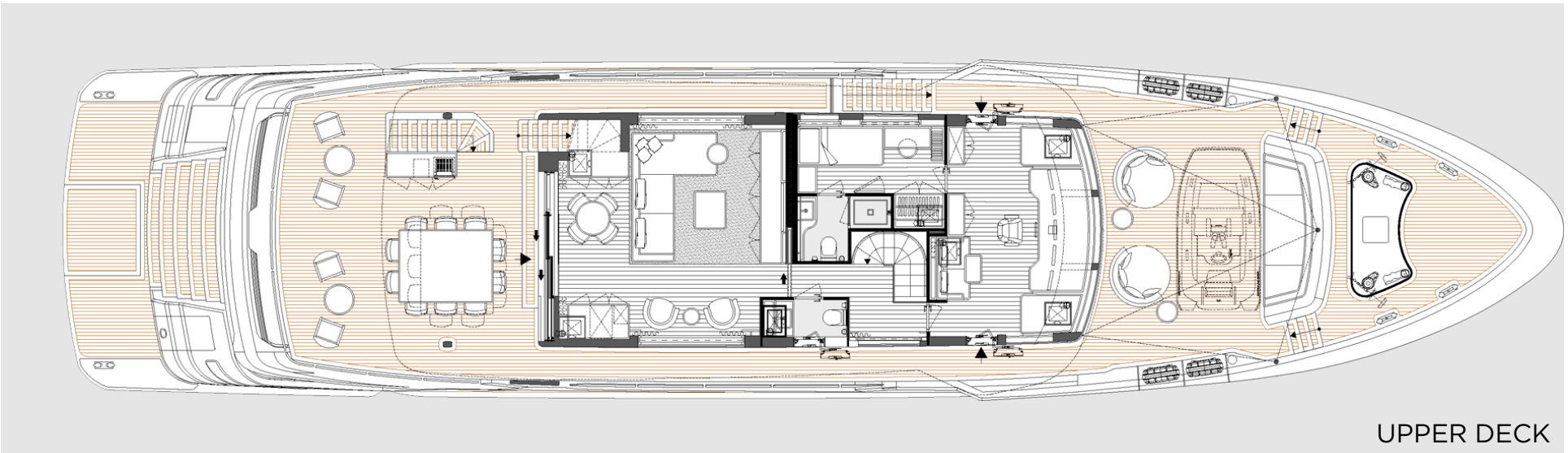
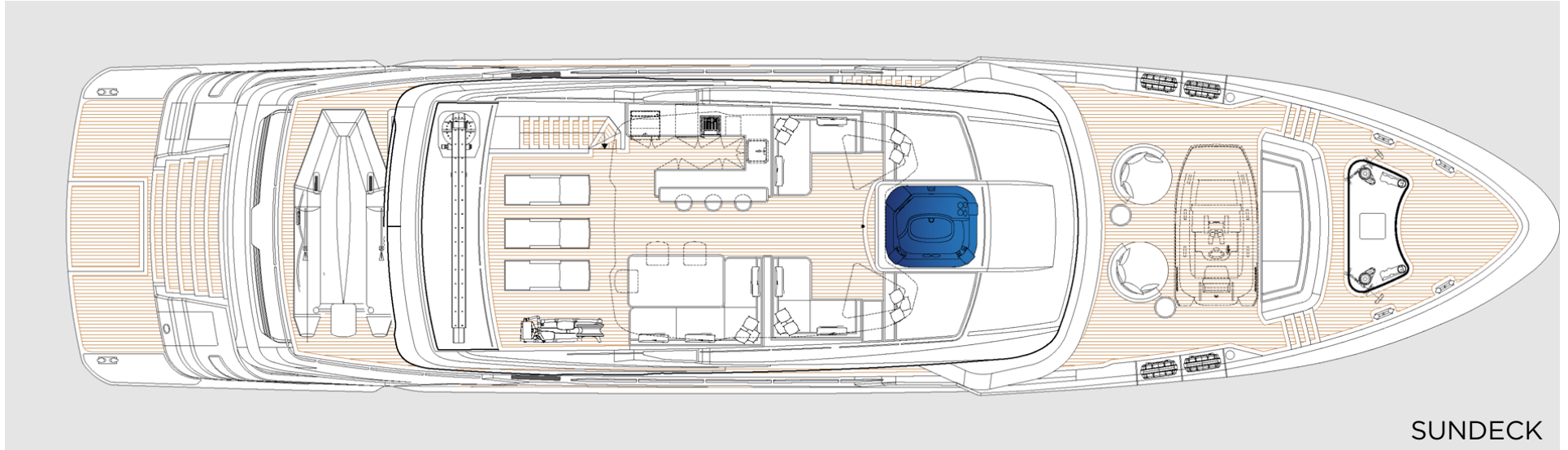


INTERIOR

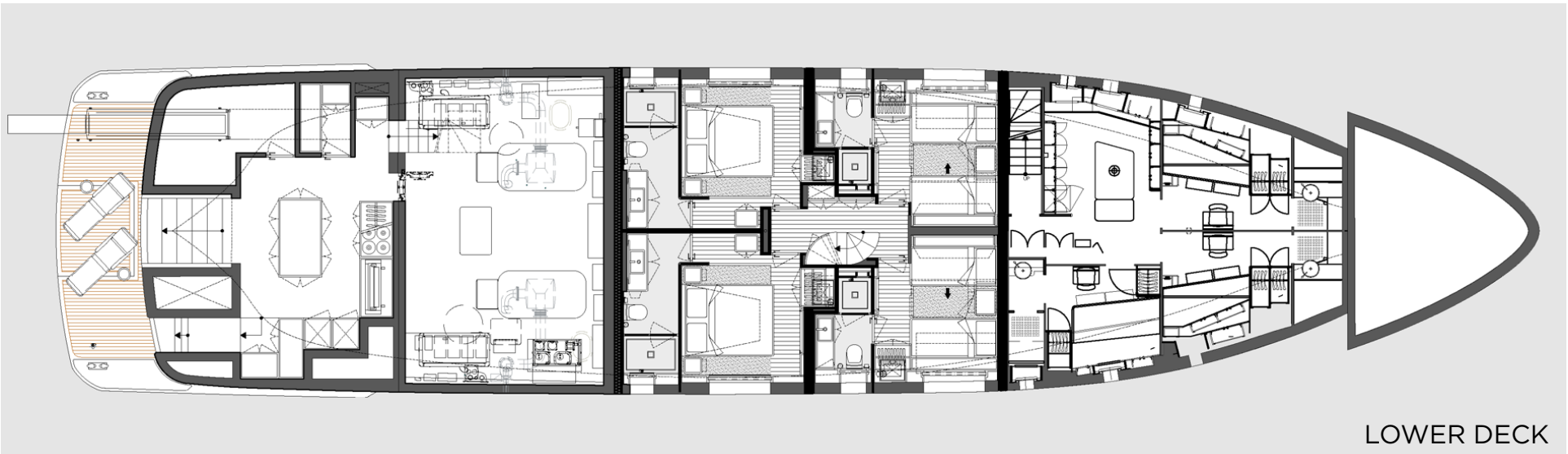
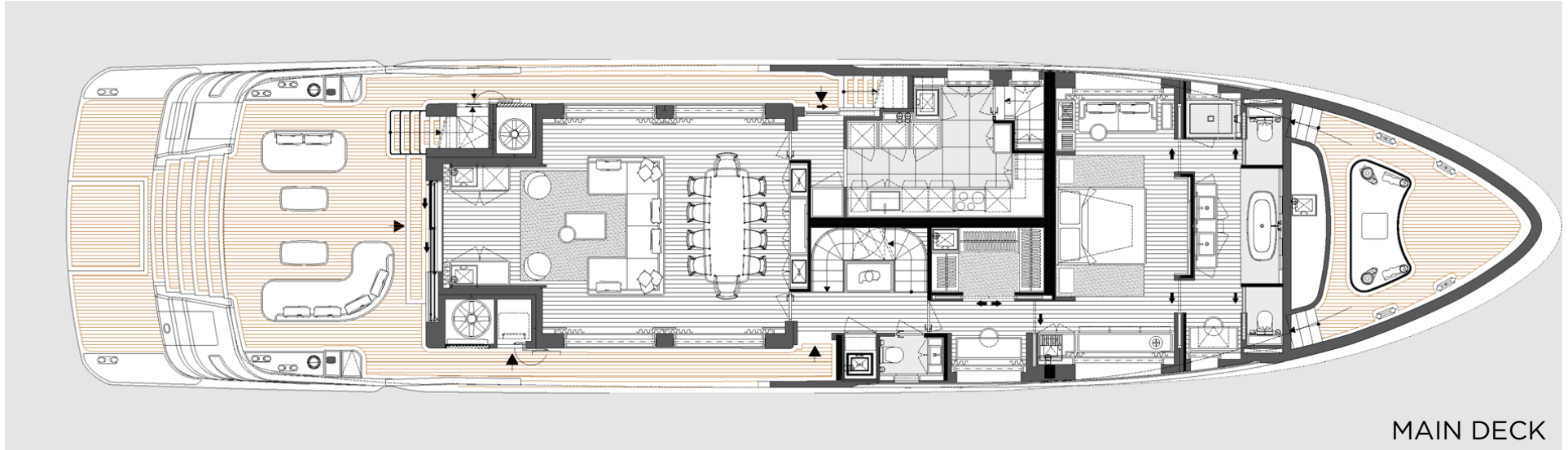


HELM STATION

> GENERAL ARRANGEMENT



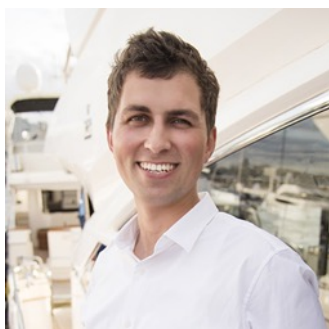
> GENERAL ARRANGEMENT





› CONTACT INFORMATION

Nord Star Superyachts specializes in yacht sales, construction, management and consulting. We provide a full range of services for yacht owner support: legal assistance, technical survey, shipping, yacht registration, insurance and crew selection.



DENIS KHAMZATOV

Head of Sales

+371 25 630 696

dk@nordstarsuperyachts.com

NORD STAR SUPERYACHTS

Marventas d.o.o.

Tržaška cesta 2,

Ljubljana, 1000 Slovenia

+386 6 818 04 88

info@nordstarsuperyachts.com

www.nordstarsuperyachts.com