



Cantiere Delle Marche RJ 130

39.42 M > 2026 > ITALY

CdM RJ 130

YACHTS FOR SALE

LOA:
39.42 m

YEAR:
2026

ASKING PRICE:
€ 23,050,000
EXCL. VAT

> ABOUT

Cantiere delle Marche rj-130 RJ 130 is a series of Explorer yacht 130ft/39.42m superyachts built in Ancona, Italy by Cantiere delle Marche.

Created to a design of Francesco Paszkowski Design, rj-130 has a Displacement Steel hull and Aluminium superstructure driven by 2 x MTU 10V2000M72 engines to a maximum speed of 14.5 knots while comfortably cruising at 12.8 knots. The fuel tank has a capacity of 58000l/12748gal what allows a yacht to cover 5500 nautical miles without the need to refuel. Cantiere delle Marche rj-130 RJ 130 has a beam of 7.8m/26ft. The gross tonnage of this Explorer yacht Cantiere delle Marche is 350 gross tons. That shows exactly how much interior space this yacht has.

Cantiere delle Marche rj-130 RJ 130 can accommodate up to 12 people in 5 elegant staterooms to be assisted by a total of 7 crew members with 4 cabins for crew members.

KEY FEATURES:

- Large spaces
- Delivery in 2026
- Official guarantee
- Italian design

The company is not responsible for the accuracy of the information provided by the Owner (images, yacht specification, list of installed equipment, its status, engine hours, legal issues). The engine hours are indicated at the time of placing information about the vessel on the site and are periodically updated in the future. Exact parameters and characteristics can be provided at the request of the buyer and are specified in the sales contract. All information provided regarding prices, condition, technical characteristics and / or the possibility of operating yachts on the water is for informational purposes and is not a public offer.

CdM RJ 130

YACHTS FOR SALE

LOA:
39.42 m

YEAR:
2026

ASKING PRICE:
€ 23,050,000
EXCL. VAT

> SPECIFICATIONS

Type	Displacement motor yacht	Deck	Teak
Delivery	late 2026	Engines	2 x MTU 10V 1207 HP
Location	Italy	Max. Speed	15.4 kn
LOA	39.42 m	Cruising speed	12.8 kn
Beam	8 m	Fuel tank	58 000 l
Draft	2.30 m	Water tank	10 000 l
Displacement	290 t	Range	5 000 nm at 10 kn
GT	420 GT	Guests	10 persons
Naval architecture	P.L. Ausonio & Azimut R&D Dept.	Crew	7 persons
Interior	Achille Salvagni Architetti	Guest accommodation	5 cabins: 1 x Double bed MASTER SUIT, 2 x Double bed VIP SUITS, 2 x Twin bedrooms with extra bed
Exterior	Stefano Righini	Crew accommodation	4 cabins: 1 x captain cabin, 3 x twin bed crew cabins
Hull	Steel		
Superstructure	Aluminium		

The company is not responsible for the accuracy of the information provided by the Owner (images, yacht specification, list of installed equipment, its status, engine hours, legal issues). The engine hours are indicated at the time of placing information about the vessel on the site and are periodically updated in the future. Exact parameters and characteristics can be provided at the request of the buyer and are specified in the sales contract. All information provided regarding prices, condition, technical characteristics and / or the possibility of operating yachts on the water is for informational purposes and is not a public offer.











SALON

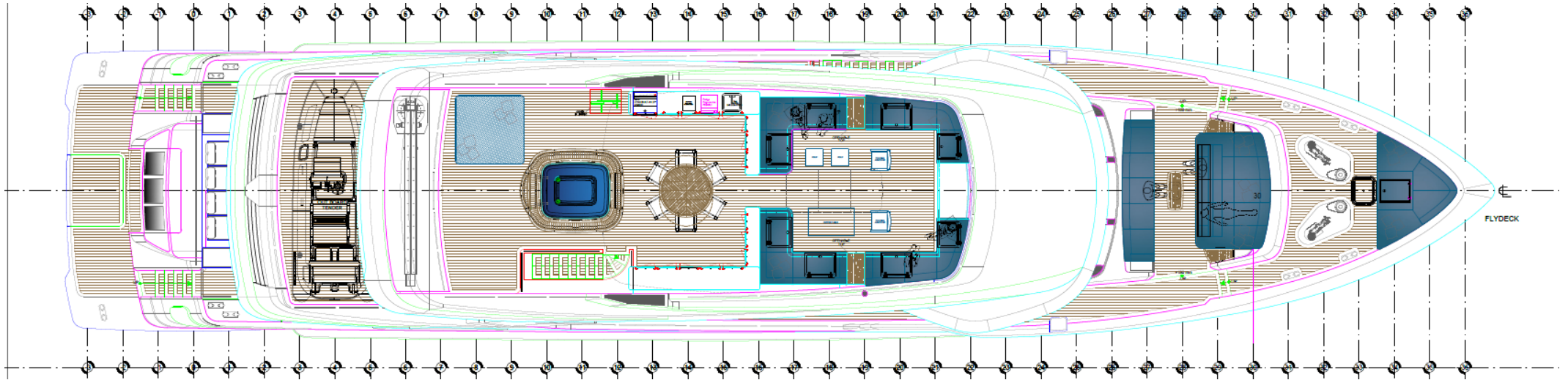


SALON

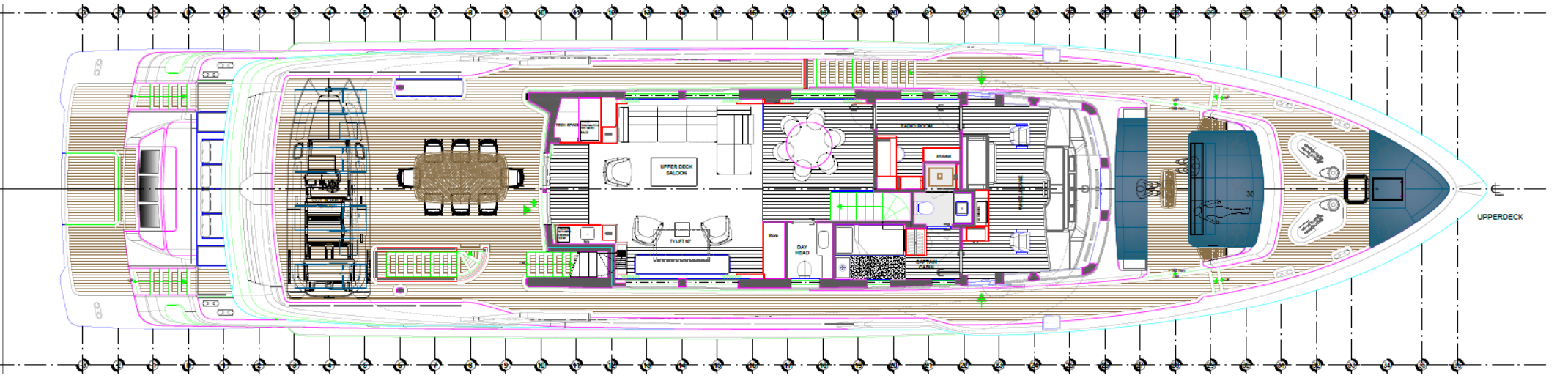


MASTER CABIN

> GENERAL ARRANGEMENT

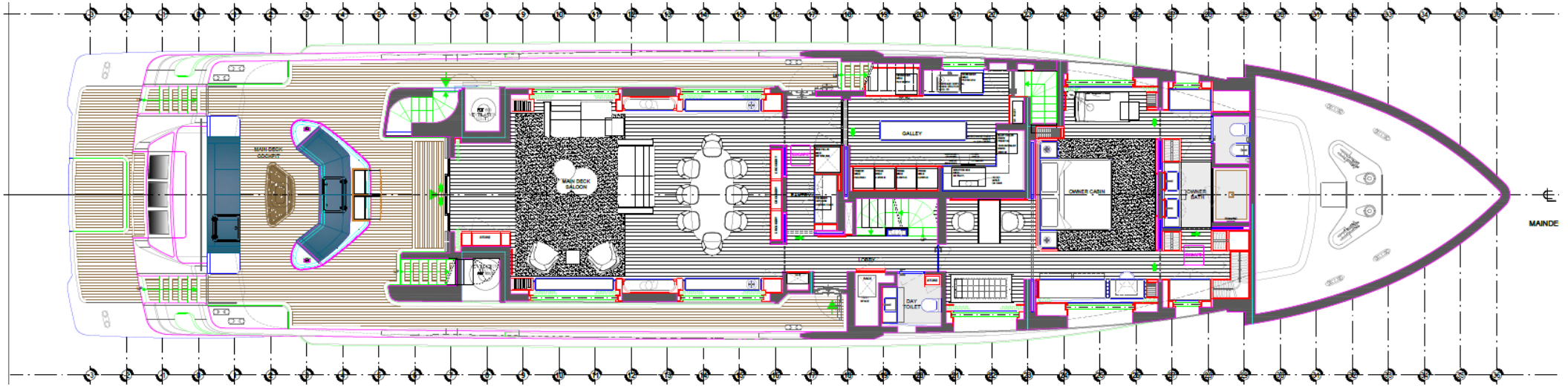


SUNDECK

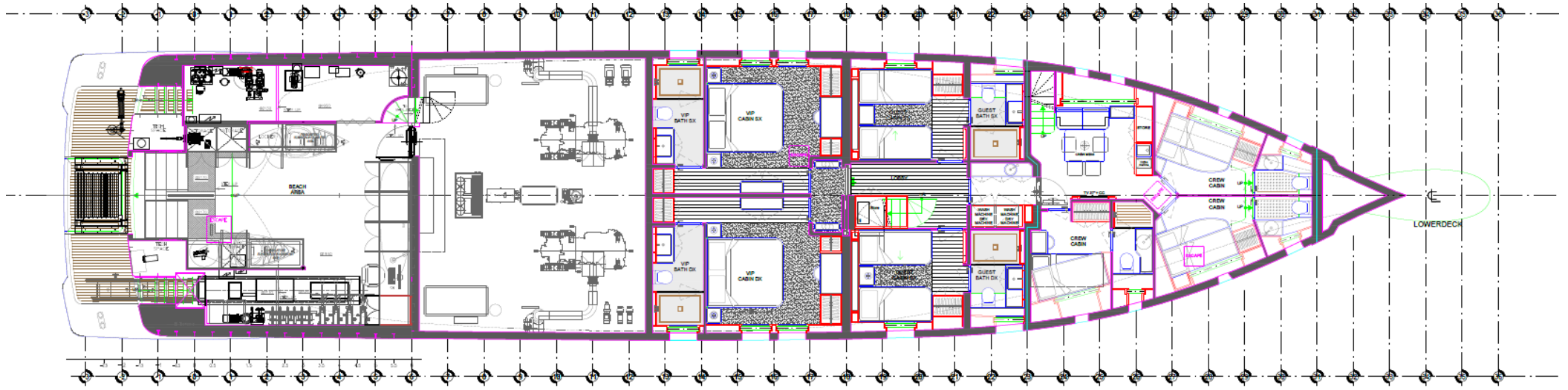


UPPER DECK

> GENERAL ARRANGEMENT



MAIN DECK



LOWER DECK



› CONTACT INFORMATION

Nord Star Superyachts specializes in yacht sales, construction, management and consulting. We provide a full range of services for yacht owner support: legal assistance, technical survey, shipping, yacht registration, insurance and crew selection.



DENIS KHAMZATOV

Head of Sales

+371 25 630 696

dk@nordstarsuperyachts.com

NORD STAR SUPERYACHTS

Marventas d.o.o.

Tržaška cesta 2,

Ljubljana, 1000 Slovenia

+386 6 818 04 88

info@nordstarsuperyachts.com

www.nordstarsuperyachts.com