



Horizon 120 Espresso

37.20 M > 2009 > TURKEY

Horizon 120 Espresso

LOA:
37.20 m

YEAR:
2009

ASKING PRICE:
€ 5,600,000
EXCL. VAT

YACHTS FOR SALE

> ABOUT

Oceandrive's interior layout sleeps up to 12 guests in 5 rooms + 2 bunk beds including a master suite, 2 VIP staterooms and 2 double cabins with additional bunk beds. She is also capable of carrying up to 5 crew onboard to ensure a relaxed luxury yacht experience. Timeless styling, beautiful furnishings and sumptuous seating feature throughout to create an elegant and comfortable atmosphere.

Oceandrive impressive leisure and entertainment facilities make her the ideal charter & private yacht for socializing and entertaining with family and friends.

Keeping comfortable and entertained on Oceandrive is easy thanks to the available amenities such as a deck jacuzzi, perfect to enjoy the scenery with your favorite drink in hand.

Whatever your activities, you'll find some impressive features are seamlessly integrated to help you such as the underwater lights, adding spectacle and style after dark. With Wi-Fi connectivity you don't have to lose contact with the outside world, unless you want to and in addition guests will experience complete comfort while chartering thanks to air conditioning.

Built with a GRP hull and GRP superstructure, she benefits from a semi-displacement hull to provide exceptional seakeeping and impressive speeds. Powered by twin MTU engines, she comfortably cruises at 11 knots, reaches a maximum speed of 14 knots with a range of up to 1,500 nautical miles from her 16,000 litre fuel tanks at 12 knots. An advanced stabilisation system on board reduces the side-to-side roll of the yacht and promises guests exceptional comfort levels at anchor or when underway.

KEY FEATURES:

- 5 guest cabins
- VAT not paid
- GRP hull

Horizon 120 Espresso

LOA:
37.20 m

YEAR:
2009

ASKING PRICE:
€ 5,600,000
EXCL. VAT

YACHTS FOR SALE

> SPECIFICATIONS

Type	Planing motor yacht	Construction	GRP
Builder	Horizon Yachts	Engines	MTU 16V 4000 M90 (2 x 3648HP)
Location	Turkey	Engine hours	1 850
Flag	Belize	Max. Speed	24 kn
Year	2009	Cruising speed	16 kn
LOA	37.20 m	Fuel tank	30 000 l
Beam	7.96 m	Water tank	3 000 l
Draft	2.03 m	Guests	12 persons
Displacement	160 t	Crew	5 persons
GT	279 GT	Guest accommodation	5 cabins
Exterior	J.C. Espinosa	Crew accommodation	3 cabins
Interior	Guido de Groot	-	-

The company is not responsible for the accuracy of the information provided by the Owner (images, yacht specification, list of installed equipment, its status, engine hours, legal issues). The engine hours are indicated at the time of placing information about the vessel on the site and are periodically updated in the future. Exact parameters and characteristics can be provided at the request of the buyer and are specified in the sales contract. All information provided regarding prices, condition, technical characteristics and / or the possibility of operating yachts on the water is for informational purposes and is not a public offer.



SUNDECK





AFT COCKPIT





SALON



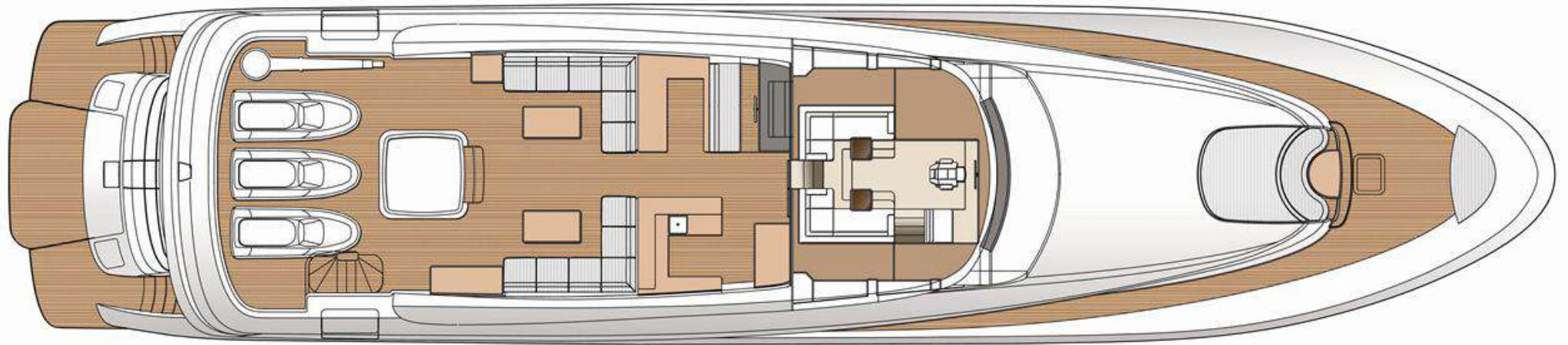
SALON



MASTER CABIN



GUEST CABINS

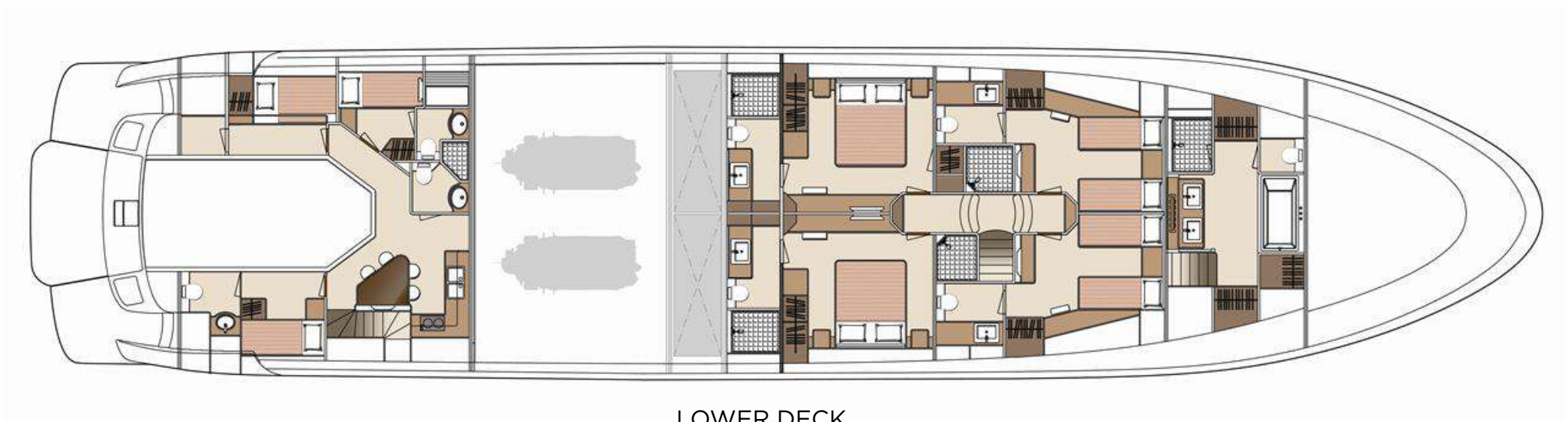


FLYBRIDGE



MAIN DECK

> GENERAL ARRANGEMENT



LOWER DECK



› CONTACT INFORMATION

Nord Star Superyachts specializes in yacht sales, construction, management and consulting. We provide a full range of services for yacht owner support: legal assistance, technical survey, shipping, yacht registration, insurance and crew selection.



DENIS KHAMZATOV

Head of Sales

+371 25 630 696

dk@nordstarsuperyachts.com

NORD STAR SUPERYACHTS

Marventas d.o.o.

Tržaška cesta 2,

Ljubljana, 1000 Slovenia

+386 6 818 04 88

info@nordstarsuperyachts.com

www.nordstarsuperyachts.com