



## Princess 30M

30.45 M > 2020 > GREECE

# Princess 30M

LOA:  
**30.45 m**

YEAR:  
**2020**

ASKING PRICE:  
**€ 7,900,000**  
EXCL. VAT

YACHTS FOR SALE

## > ABOUT

Princess 30M was built in 2019 and delivered to the first and only Owner in 2020. She is a luxurious raised pilothouse yacht with an exterior design by Olesinski and an interior by the Princess Design Studio, she is one of the most spacious yachts in the 30m segment.

Princess 30M was operated exclusively by the Owner and his family, having actually spent only one season on the water. She cruises at 16 knots and reaches a top speed of 20 kn. She can sleep up to 10 guests in 5 luxury cabins taken care of by a crew of 5.

Key features:

- walkthrough video is available on request
- 5 cabin layout
- spa on the upper deck
- illuminated onyx trim in the dining area
- delivered in 2020 (HIN number)
- motivated owner

Princess 30M is still available for viewings in Greece, so please contact us to book an inspection.

## KEY FEATURES:

- 5 guest cabins
- VAT not paid
- GRP hull

# Princess 30M

LOA:  
**30.45 m**

YEAR:  
**2020**

ASKING PRICE:  
**€ 7,900,000**  
EXCL. VAT

YACHTS FOR SALE

## > SPECIFICATIONS

Type	Semi-displacement motor yacht	Exterior & Concept	Olesinski Design, Princess Yachts Design Studio
Builder	Princess Yachts	Deck	Teak
Location	Greece	Engines	MTU 12V 2000 M96 (2 x 1948HP)
Year	2020	Engine hours	380
Flag	Jersey	Max. Speed	22 kn
LOA	30.45 m	Cruising speed	16 kn
Beam	7.05 m	Fuel tank	12 228 l
Draft	2.06 m	Water tank	1 614 l
Displacement	114 t	Guests	10 persons
GT	162 GT	Crew	5 persons
Hull	GRP	Guest accommodation	5 cabins
Superstructure	GRP	Crew accommodation	3 cabins
Interior	Princess Yachts Design Studio	Class	RINA

The company is not responsible for the accuracy of the information provided by the Owner (images, yacht specification, list of installed equipment, its status, engine hours, legal issues). The engine hours are indicated at the time of placing information about the vessel on the site and are periodically updated in the future. Exact parameters and characteristics can be provided at the request of the buyer and are specified in the sales contract. All information provided regarding prices, condition, technical characteristics and / or the possibility of operating yachts on the water is for informational purposes and is not a public offer.









SUNDECK





AFT COCKPIT





SALON



SALON





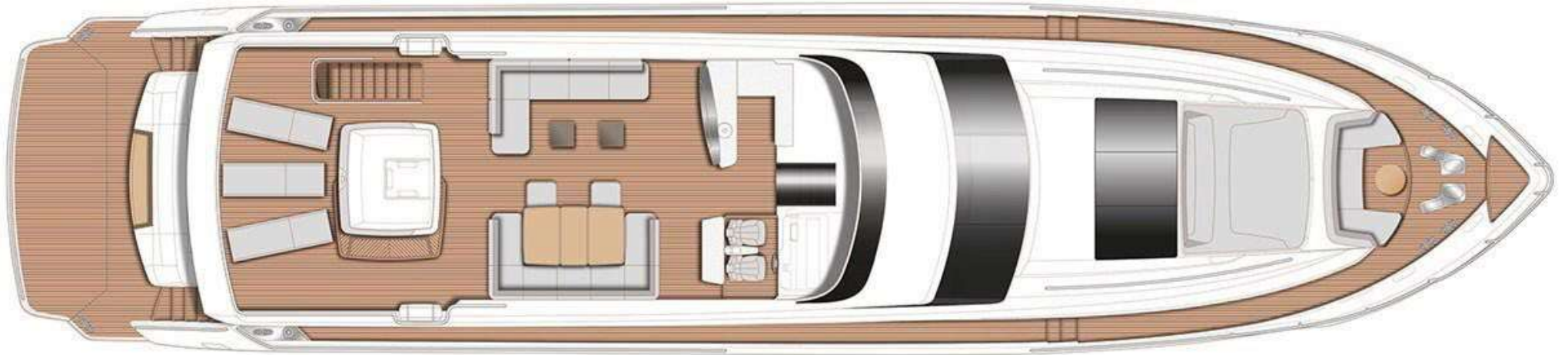
MASTER CABIN



GUEST CABINS



> GENERAL ARRANGEMENT

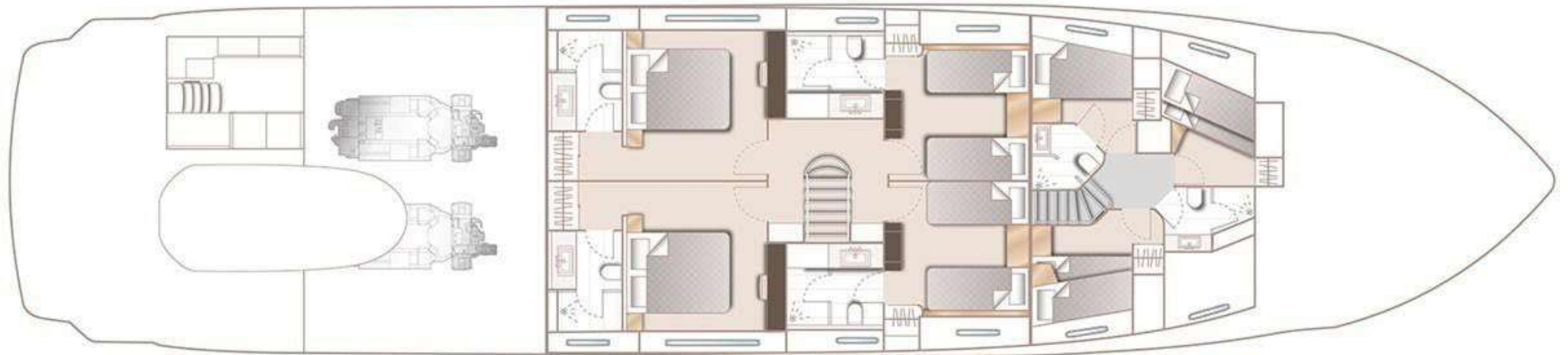


FLYBRIDGE



MAIN DECK

> GENERAL ARRANGEMENT



LOWER DECK



# Princess 30M

YACHTS FOR SALE

LOA:  
**30.45 m**

YEAR:  
**2020**

ASKING PRICE:  
**€ 7,900,000**  
EXCL. VAT

## > SPECIFICATIONS

- 5 cabin guest layout incorporating two aft VIP staterooms on the lower deck. (N.B. Saloon dining table to seat up to 10 people with 2 additional chairs provided)
- Remote control for engines/thrusters with plug in point either side of wheelhouse (MTU engines only).
- Hydraulic system combining fully proportional speed controlled bow & stern thruster and windlass system is supplied as standard. Each engine drives its own hydraulic pump with cross connections allowing any hydraulic systems to be supplied from either engine.
- Fin stabiliser system to provide stabilisation underway and also zero speed stabilisation. An additional electro-hydraulic motor powers the system for zero speed stabilisation when the main engines are shut down.
- Crew accommodation area furniture is in white finish as standard. Galley area units are in white finish and servery in boat timber.
- Rovere Oak interior wood gloss finish (with walnut interior floors where specified as standard).
- Servery, helm and upper lobby are fitted with timber flooring as standard. Saloon/dining, guest cabins, lower lobby and crew cabins are fitted with carpet as standard. Crew lobby and galley are fitted with high wear vinyl safety flooring as standard.
- One of the forward lower deck staterooms to have single beds with powered sliding mechanism to convert to double bed.
- Alternative saloon layout with 2 x three seater sofas (one fitted forward and one to port side), two armchairs and circular coffee table.
- Low level seating stools (2) to be supplied for starboard side main deck saloon.
- Saloon starboard side sliding doors in place of full height window.
- Electrically operated sliding door between dining area and main lobby.
- Spa bath on flybridge.
- Standard flybridge layout comprises 'L' shaped seating to port with 2 x Dedon Lounge coffee tables. 'U' shaped seating to starboard dining table (with removable centre section) and 2 x Zidz Carver chairs (includes cushion in owners choice fabric).
- Standard Galley appliances include a Miele single oven, Miele hob & extractor, Miele microwave combination oven, Miele full sized dishwasher, Miele built-in coffee machine, 2 x full height fridge freezer (296 + 100 lts each). An ice maker and wine cooler are located in the servery area. A Miele washing machine and separate tumble dryer are located in the crew area. Galley and servery worktops are in Black Quartz as standard.
- Fit trash compactor in galley.
- Master and guest bathrooms incorporate heated towel rails and have marble or granite worktops and floors (To be chosen from the Princess Desgin Studio standard stone range). Crew bathroom worktops and floors are solid surface Koko white.

The company is not responsible for the accuracy of the information provided by the Owner (images, yacht specification, list of installed equipment, its status, engine hours, legal issues). The engine hours are indicated at the time of placing information about the vessel on the site and are periodically updated in the future. Exact parameters and characteristics can be provided at the request of the buyer and are specified in the sales contract. All information provided regarding prices, condition, technical characteristics and / or the possibility of operating yachts on the water is for informational purposes and is not a public offer.

# Princess 30M

YACHTS FOR SALE

LOA:  
**30.45 m**

YEAR:  
**2020**

ASKING PRICE:  
**€ 7,900,000**  
EXCL. VAT

## > SPECIFICATIONS

- Heated towel rail to be fitted in crew bathroom (note not possible in the captains cabin)
- Sun awning covering area 4m aft of flybridge hardtop (featuring carbon fibre poles, stainless steel fixtures, lightweight hydrophobic canvas top with hidden pulley system).
- Continental 220v/240v sockets.
- Bow docking lights (stern docking lights are standard).
- Underwater lighting to aft hull sides (Ocean LED XFM 250 i.e. 5 per side).
- Icemaker fitted in cockpit bar (icemakers are fitted as standard in servery and in flybridge bar).
- Drawer fridge (100 ltr) fitted in flybridge wetbar.
- Foredeck area to have waterproof speakers and local control (linked to saloon system).
- Marine router acting as a single control point for Satphone (when selected), 3G/4G services and marine Wi-Fi networks. Easily accessed and controlled via a web browser on any connected device, the router allows the owner and/or crew to control and restrict internet connections and access to the Satphone. Wi-Fi coverage is provided throughout the vessel including crew and external guest areas.

- Standard navigation equipment incorporates a “glass bridge” display with 2 x Raymarine 15.4” gS series high definition screens in the wheelhouse with remote control and 1 x 15.4”gS series screen on the flybridge. Wheelhouse screens display radar, chart plotter, GPS, and CCTV (engine instrumentation are displayed at both control positions via HD screens). Raymarine 4ft/4kw open array HD colour radar is also standard supply. • Raymarine AIS Class B transponder • Flybridge GRP hardtop with electrically operated opening center section in white fabric





## > CONTACT INFORMATION

Nord Star Superyachts specializes in yacht sales, construction, management and consulting. We provide a full range of services for yacht owner support: legal assistance, technical survey, shipping, yacht registration, insurance and crew selection.



### **DENIS KHAMZATOV**

Head of Sales

+371 25 630 696

[dk@nordstarsuperyachts.com](mailto:dk@nordstarsuperyachts.com)

### **NORD STAR SUPERYACHTS**

Marventas d.o.o.

Tržaška cesta 2,

Ljubljana, 1000 Slovenia

+386 6 818 04 88

[info@nordstarsuperyachts.com](mailto:info@nordstarsuperyachts.com)

[www.nordstarsuperyachts.com](http://www.nordstarsuperyachts.com)