



Sanlorenzo 52 Steel

52.00 M > 2026 > ITALY

Sanlorenzo 52 Steel

LOA:
52.00 m

YEAR:
2026

ASKING PRICE:
€ 33,000,000
EXCL. VAT

YACHTS FOR SALE

> ABOUT

Her top speed is 18.0 kn, her cruising speed is 16.0 kn, and she boasts a maximum cruising range of 4400.0 nm at 11.0 kn, with power coming from two MTU diesel engines. She can accommodate up to 10 guests in 5 staterooms, with 9 crew members waiting on their every need. She has a gross tonnage of 499.0 GT and a 9.4 m beam.

She was architected by Sanlorenzo, who also designed the interior. Sanlorenzo created the naval architecture for 569 yachts, and designed the interior of 94 yachts.

She was designed by Officina Italiana Design, who has designed 284 other superyachts in the BOAT Pro database.

When delivered, SAN LORENZO 52 STEEL NEO will join a fleet of 187 motor yachts in the 50-55m size range. Compared to similarly sized motor yachts, her cruising speed will be 1.88 kn above the average and her top speed 0.97 kn above the average.

KEY FEATURES:

- Garage for tender and jet ski
- Delivery in 2026
- Official guarantee
- Italian design

The company is not responsible for the accuracy of the information provided by the Owner (images, yacht specification, list of installed equipment, its status, engine hours, legal issues). The engine hours are indicated at the time of placing information about the vessel on the site and are periodically updated in the future. Exact parameters and characteristics can be provided at the request of the buyer and are specified in the sales contract. All information provided regarding prices, condition, technical characteristics and / or the possibility of operating yachts on the water is for informational purposes and is not a public offer.

Sanlorenzo 52 Steel

LOA:
52.00 m

YEAR:
2026

ASKING PRICE:
€ 33,000,000
EXCL. VAT

YACHTS FOR SALE

> SPECIFICATIONS

Type	Displacement motor yacht	Deck	Teak
Delivery	2026	Engines	2 x MTU 12V 2000 HP
Location	Italy	Max. Speed	16 kn
LOA	52.00 m	Cruising speed	12 kn
Beam	9.35 m	Fuel tank	55 000 l
Draft	2.90 m	Water tank	16 120 l
Displacement	500 t	Range	4 000 nm at 10 kn
GT	499 GT	Guests	10 persons
Naval architecture	Sanlorenzo	Crew	9 persons
Interior	Sanlorenzo	Guest accommodation	5 cabins: 1 x Double bed MASTER SUIT, 2 x Double bed VIP SUITS, 2 x Twin bedrooms with extra bed
Exterior	Officina Italiana Design	Crew accommodation	5 cabins: 1 x captain cabin, 4 x twin bed crew cabins
Hull	Steel		
Superstructure	Aluminium		

The company is not responsible for the accuracy of the information provided by the Owner (images, yacht specification, list of installed equipment, its status, engine hours, legal issues). The engine hours are indicated at the time of placing information about the vessel on the site and are periodically updated in the future. Exact parameters and characteristics can be provided at the request of the buyer and are specified in the sales contract. All information provided regarding prices, condition, technical characteristics and / or the possibility of operating yachts on the water is for informational purposes and is not a public offer.







SUNDECK



SUNDECK



AFT DECK

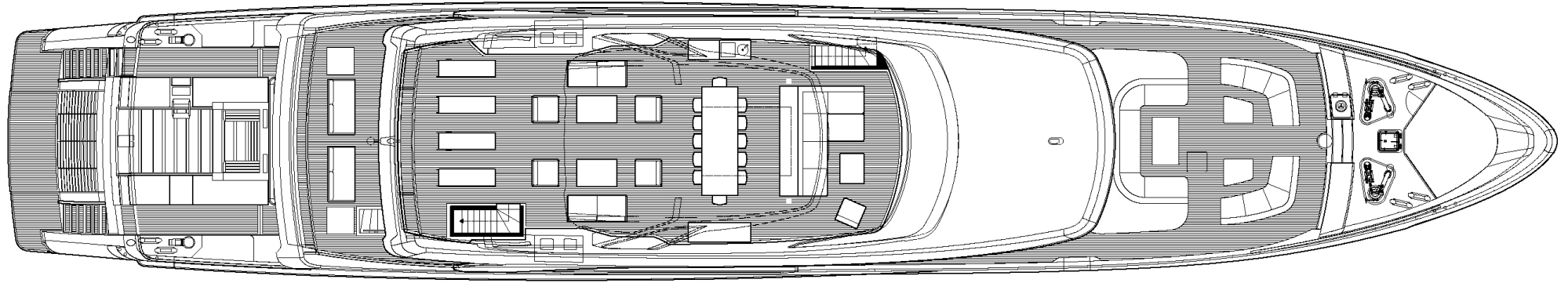


SALON



MASTER CABIN



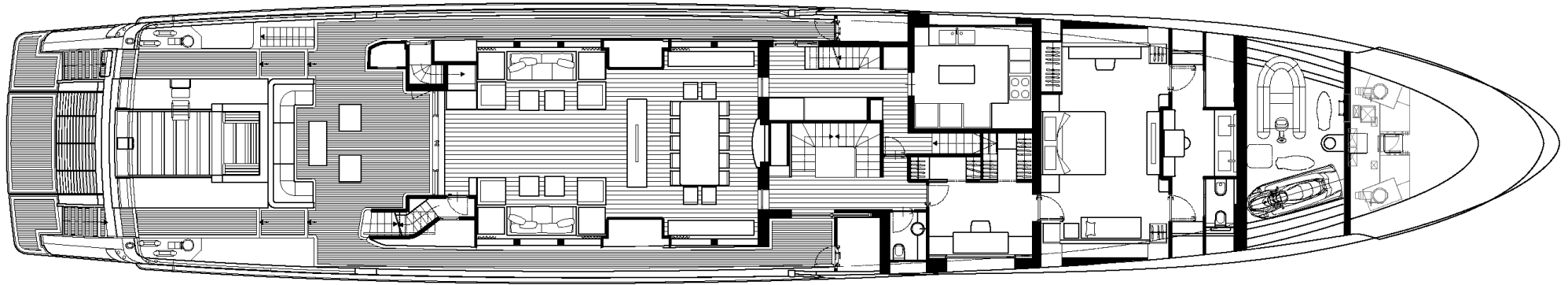


SUNDECK

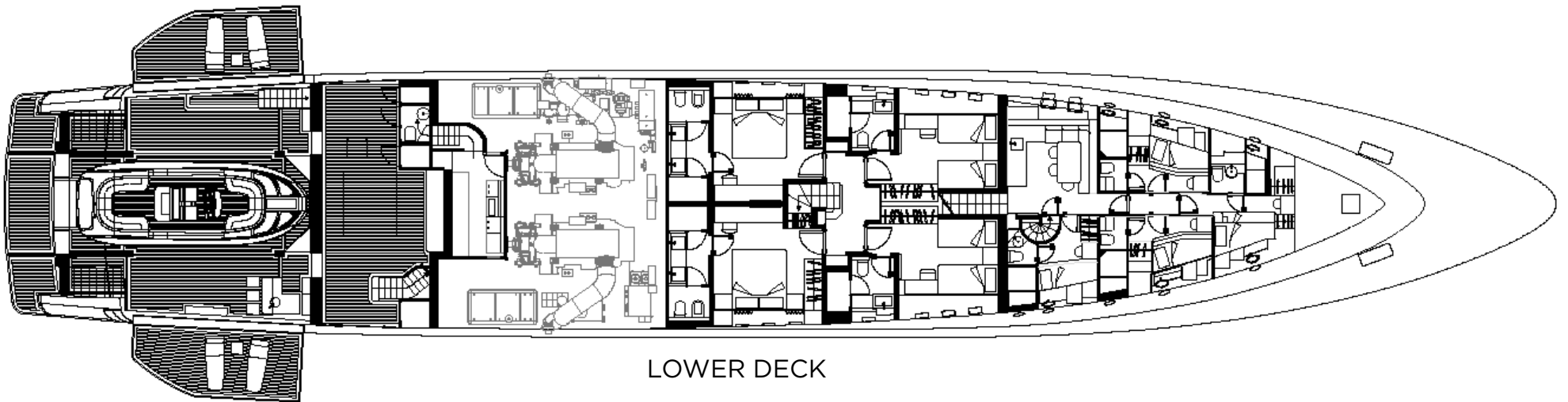


UPPER DECK

> GENERAL ARRANGEMENT

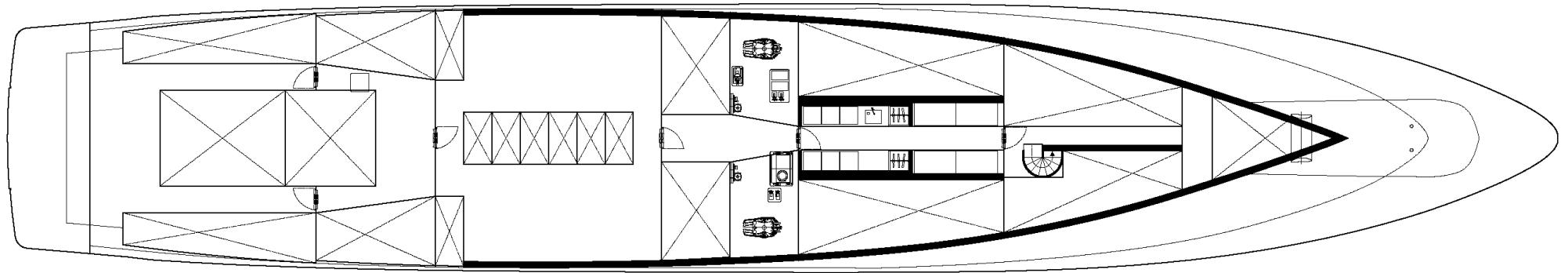


MAIN DECK



LOWER DECK

> GENERAL ARRANGEMENT



MAIN DECK



› CONTACT INFORMATION

Nord Star Superyachts specializes in yacht sales, construction, management and consulting. We provide a full range of services for yacht owner support: legal assistance, technical survey, shipping, yacht registration, insurance and crew selection.



DENIS KHAMZATOV

Head of Sales

+371 25 630 696

dk@nordstarsuperyachts.com

NORD STAR SUPERYACHTS

Marventas d.o.o.

Tržaška cesta 2,

Ljubljana, 1000 Slovenia

+386 6 818 04 88

info@nordstarsuperyachts.com

www.nordstarsuperyachts.com