



UNASOLA

43.10 M | 2017 | TURKEY | € 22,500,000, excl. VAT

UNASOLA

DESCRIPTION

Motor yacht Mangusta Oceano 43 UNASOLA was built by the Italian shipyard Overmarine in 2017. The design of the exterior and interior was carried out by the famous Italian yacht designer Alberto Mancini. With refined and luxurious finishes, plenty of natural light and designer lighting throughout, UNASOLA can be described as a luxurious three-deck villa. On board there is a fully automated balcony in the master cabin on the main deck, an infinity pool at the bow of the yacht and a large beach club in the stern with the possibility of storing water toys.

UNASOLA can accommodate up to 12 guests in 5 luxurious cabins, as well as 7 crew members. The yacht has a steel hull and an aluminum superstructure. Powered by two MTU 12V 2000 M72 engines (1080 kW, 1448 hp at 2250 rpm), the yacht is capable of a cruising speed of 11.0 knots and a top speed of 15.0 knots. The fuel reserve is 62,000 liters. Fresh water tanks can hold up to 12,000 liters.

The yacht is equipped with the Zero-Speed stabilizers by CMC. The range at economical cruising speed is up to 7,000 nautical miles.

The yacht is available for viewing by appointment.

VAT has not been paid.

Detailed specification and photo report of Mangusta Oceano 43 UNASOLA are available upon request.



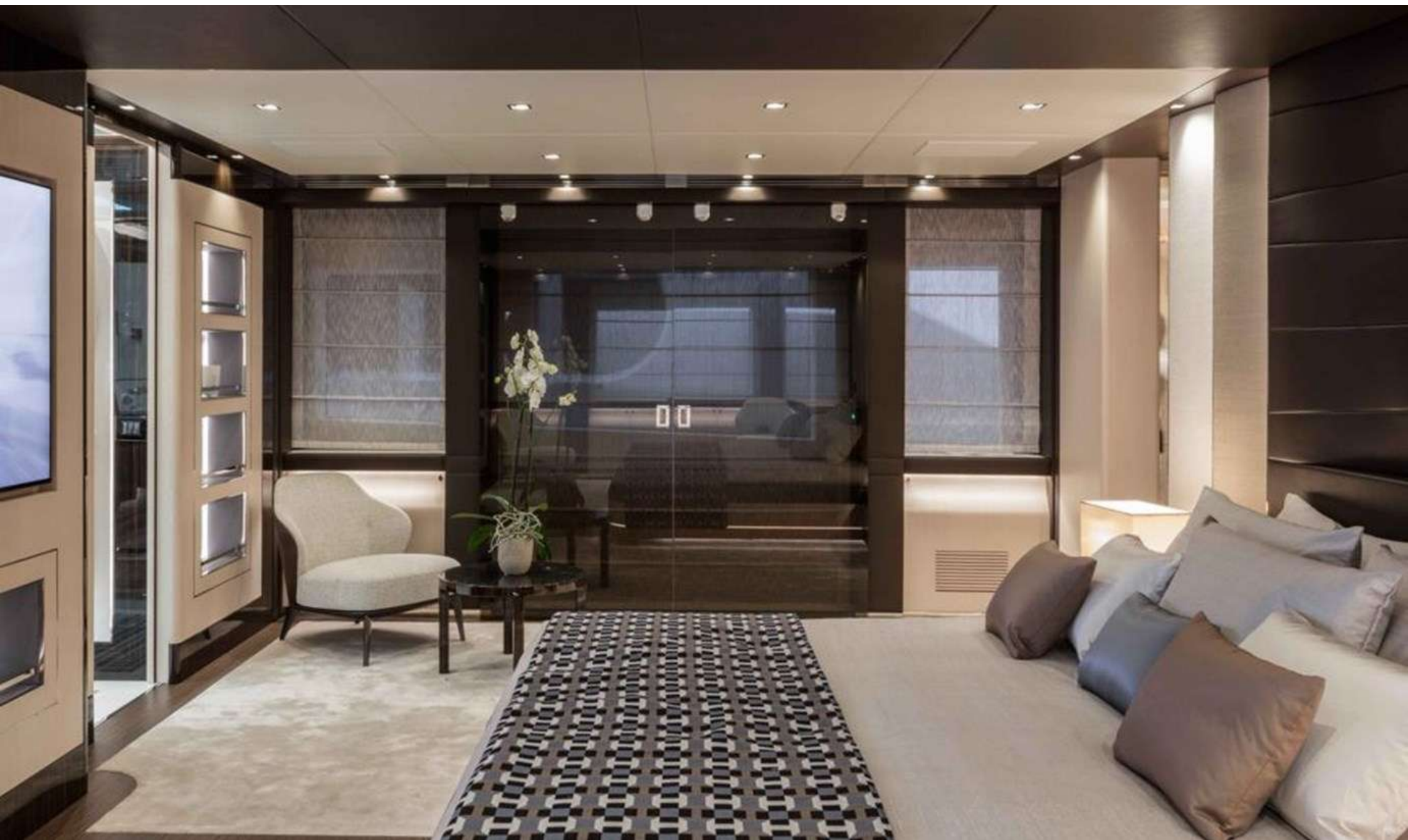






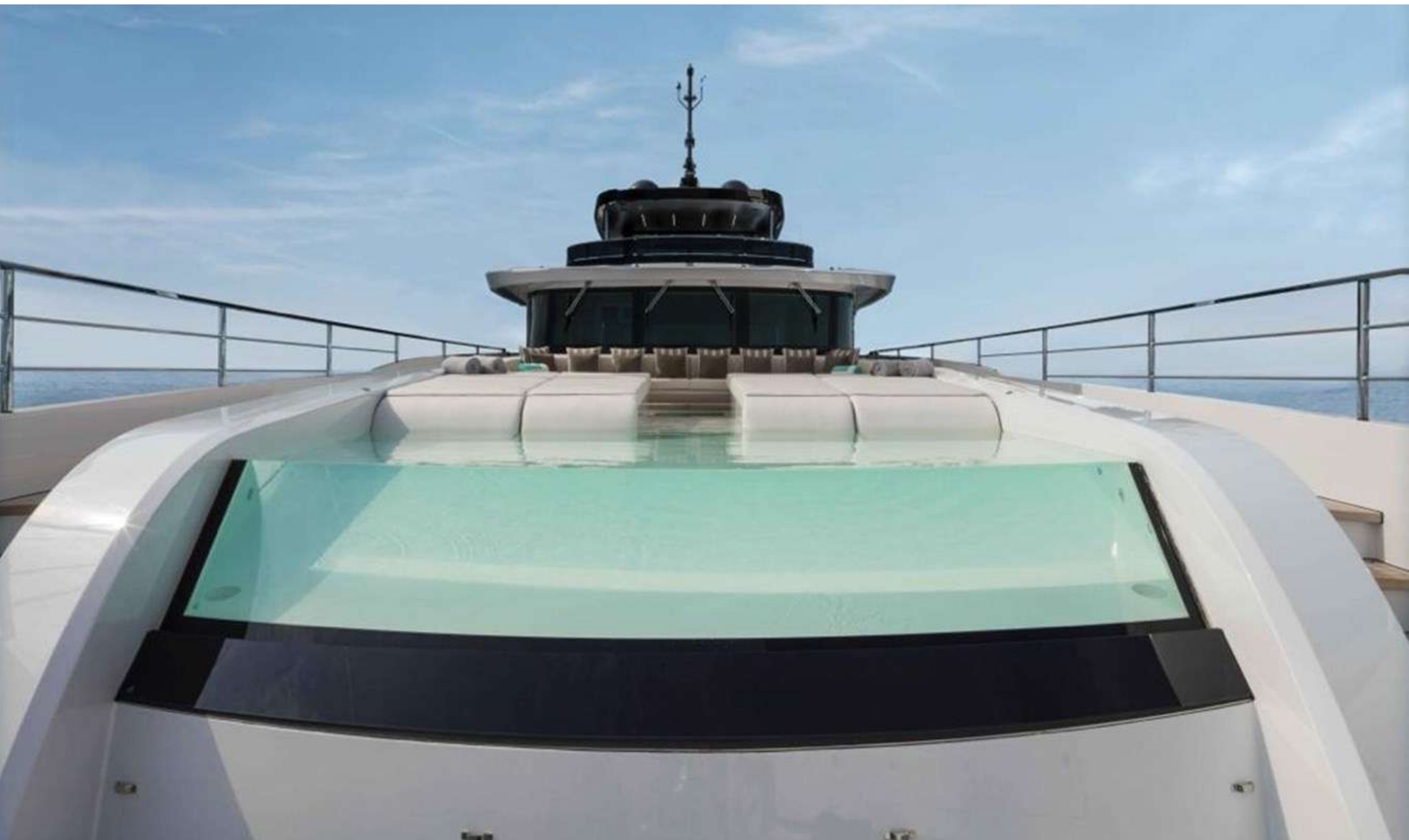


















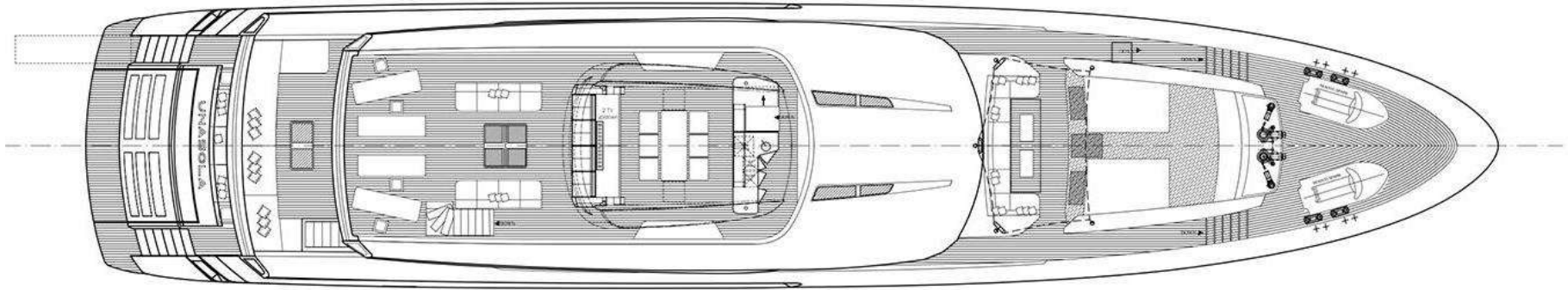
UNASOLA

CHARACTERISTICS

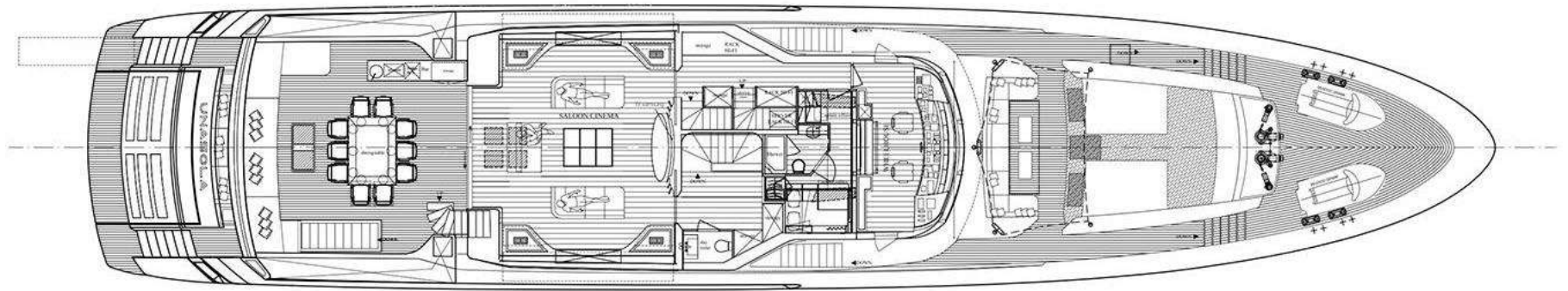
TYPE	Displacement motor yacht	
YEAR BUILT	2017	
SHIPYARD	Overmarine, Italy	
CLASS	RINA	
LOCATION	Turkey	
FLAG	-	
VAT	Not paid	
LENGTH	41,10 m	
BEAM	8,75 m	
DRAFT	2,40 m	
DISPLACEMENT	407 t	
GROSS TONNAGE	451 GT	
ACCOMODATION	10/12 guests in 5 cabins	
CREW	7 crew members in 4 cabins	
NAVAL ARCHITECT	Overmarine	
INTERIOR DESIGN	Alberto Mancini	
EXTERIOR DESIGN	Alberto Mancini	
CONSTRUCTION	Hull:	Steel
	Superstructure:	Aluminium
	Deck:	Teak
MAIN ENGINES	Diesel engines MTU 12V M72, 2 x 2000hp	
MAX. SPEED	15 kn	
CRUISING SPEED	11 kn	
FUEL TANKS	64000 l	
WATER CAPACITY	12000 l	

UNASOLA

GENERAL ARRANGEMENT



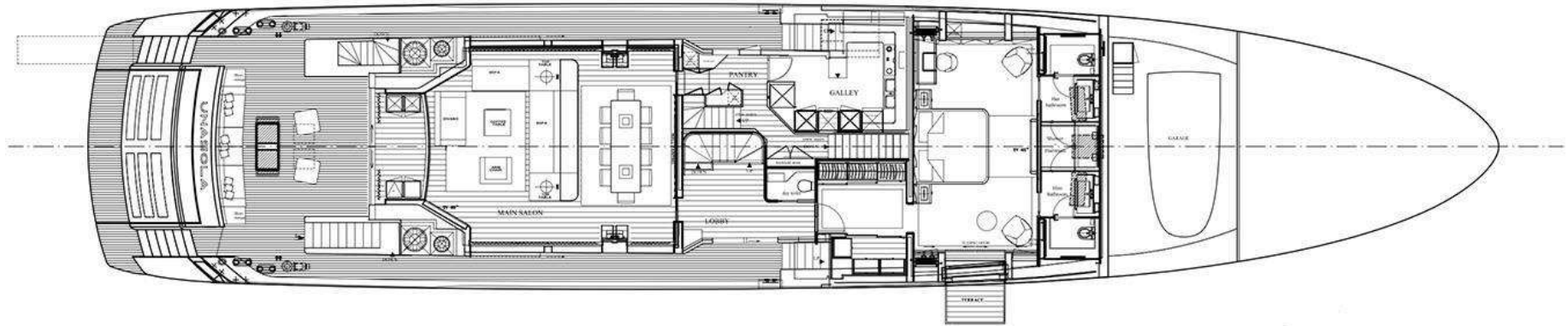
FLYBRIDGE



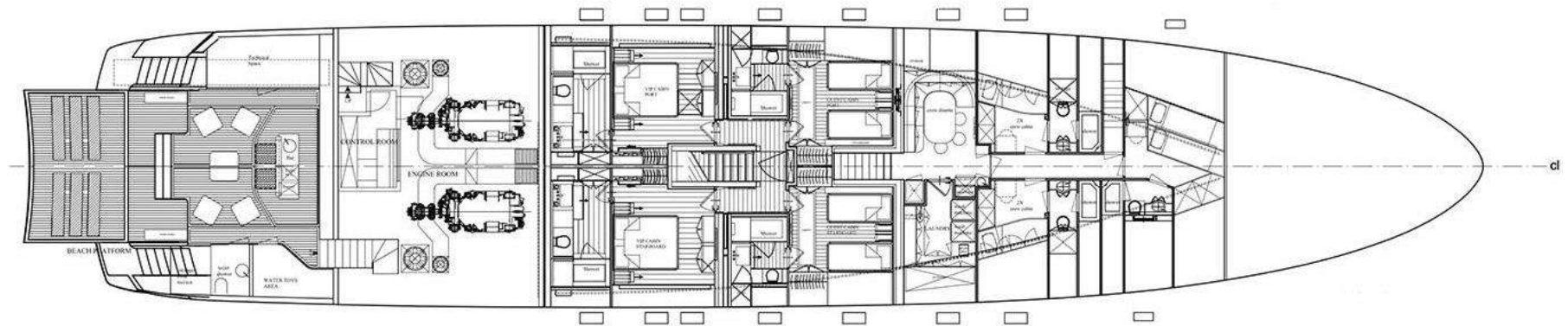
UPPER DECK

UNASOLA

GENERAL ARRANGEMENT



MAIN DECK



LOWER DECK