



## Princess Y85

26.20 M > 2020 > ITALY

# Princess Y85

YACHTS FOR SALE

LOA:  
**26.20 m**

YEAR:  
**2020**

ASKING PRICE:  
**€ 4,999,000**  
EXCL. VAT

## > ABOUT

Nord Star Superyachts is pleased to present a magnificent 26.2m Princess Y85 motor yacht delivered in 2020.

The Y85 is classically Princess. The refined full length hull glazing compliments the latest Y Class styling, encompassing an interior sanctuary within.

Princess Y85 has undergone an extensive **refit in 2022/2023**:

- new floor in the main saloon (light wood)
- new sofa in the main saloon port side
- new cabinet with the fold out TV mechanism by Alberto Spadolini in the main saloon stbd
- new floor in the kitchen
- new bed in the master cabin
- new carpets throughout the boat
- onyx panel with backlight in the saloon next to the lower cabin entrance
- alternative flybridge layout
- new (bigger) master bed
- warranty works done by Princess Yachts - new upholstery of all main saloon, wheelhouse and master cabin window frames (original frames upholstery had "bubbling" effect, shipyard supplied a new material and paid full replacement).

The yacht is available for viewing in Italy.

## KEY FEATURES:

- Extensive refit in 2022/2023
- VAT not paid
- GRP hull

# Princess Y85

YACHTS FOR SALE

LOA:  
**26.20 m**

YEAR:  
**2020**

ASKING PRICE:  
**€ 4,999,000**  
EXCL. VAT

## > SPECIFICATIONS

|                |                                |                     |                           |
|----------------|--------------------------------|---------------------|---------------------------|
| Type           | Planing motor yacht            | Deck                | Teak                      |
| Builder        | Princess yachts                | Engines             | MAN V12-1900 (2 x 1900HP) |
| Location       | Italy                          | Engine hours        | 1 080                     |
| Year           | 2020                           | Max. Speed          | 30-32 kn                  |
| Flag           | -                              | Fuel tank           | 11 000 l                  |
| LOA            | 26.20 m                        | Water tank          | 1 295 l                   |
| Beam           | 6.26 m                         | Guests              | 8 persons                 |
| Draft          | 1.89 m                         | Crew                | 4 persons                 |
| Displacement   | 75.97 t                        | Guest accommodation | 4 cabins                  |
| Design         | Bernard Olesinski, Pininfarina | Crew accommodation  | 2 cabins                  |
| Hull           | GRP                            | Class               | CE design category (A)    |
| Superstructure | GRP                            | -                   | -                         |

The company is not responsible for the accuracy of the information provided by the Owner (images, yacht specification, list of installed equipment, its status, engine hours, legal issues). The engine hours are indicated at the time of placing information about the vessel on the site and are periodically updated in the future. Exact parameters and characteristics can be provided at the request of the buyer and are specified in the sales contract. All information provided regarding prices, condition, technical characteristics and / or the possibility of operating yachts on the water is for informational purposes and is not a public offer.







SUNDECK





FOREDECK



SALON





SALON





MASTER CABIN





GUEST CABINS





> GENERAL ARRANGEMENT

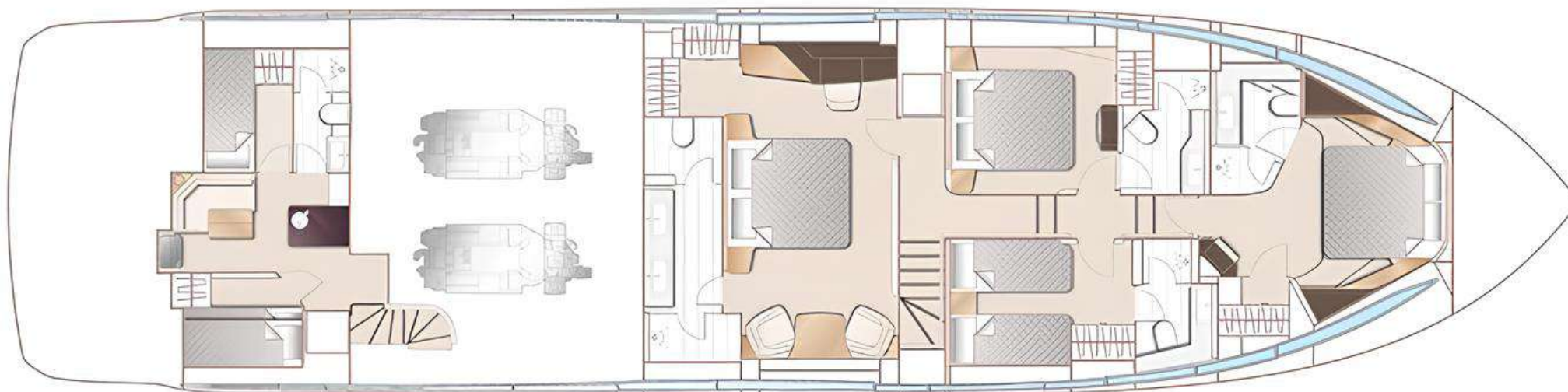


FLYBRIDGE



MAIN DECK

> GENERAL ARRANGEMENT



LOWER DECK



# Princess Y85

YACHTS FOR SALE

LOA:  
**26.20 m**

YEAR:  
**2020**

ASKING PRICE:  
**€ 4,999,000**  
EXCL. VAT

## > SPECIFICATIONS

### STANDARD FEATUTURES

- Power-assisted electro-hydraulic steering system
- Bow thruster (300kgf)
- 24v DC/240v AC electrical system
- 240v shore power with 2 x 100-amp float battery chargers
- 220v/240v diesel generator (2 x 27kW) (2100/2200 hours)
- Full air-conditioning
- Electric stern rope mooring winches
- Dual station twin hydraulic anchor winches
- Stainless-steel anchors
- Deck/anchor wash
- Dual station electro-hydraulic trim tabs with indicators
- Dual station autopilot
- Dual station VHF with DSC R/T with intercom
- Dual station colour radar/chart plotter/GPS
- Dual station speed and distance log
- Dual station echo sounder with alarm
- Dual station remote control searchlight
- Combination microwave/conventional oven/grill
- Full height refrigerator and deep freeze
- Cocktail cabinet with refrigerator Icemaker
- Flybridge wetbar including sink, electric barbecue and refrigerator
- Dishwasher
- Electric quietflush toilets with holding tank

- Saloon LED TV with DVD and surround-sound system
- LED TV and DVD with CD/radio in all staterooms
- Saloon and flybridge stereo radio/iPod, MP3 dock
- Teak-laid transom platform/cockpit deck/flybridge stairway/ stairs to side decks
- Teak-laid side decks, foredeck walkthrough and flybridge
- Flybridge sunbed and cushions
- Opening doors to both side decks
- Stainless-steel framed saloon doors
- Remote control telescopic passerelle
- Twin transom doors
- Electro-hydraulic raise/lower system to transom platform
- Hot and cold transom shower
- Two fully fitted crew cabins with crew mess and laundry
- Cockpit cover

### STABILISATION

- Sleipner Hydraulic system (consisting of separate engine driven hydraulic pumps on each engine with cross connections allowing any system to be supplied with hydraulic power from either engine) and incorporating SPS92/VF1350 vector fin stabilizer system. When underway fins are driven by engine powered hydraulic pumps and at zero speed by a generator powered electric motor.

The company is not responsible for the accuracy of the information provided by the Owner (images, yacht specification, list of installed equipment, its status, engine hours, legal issues). The engine hours are indicated at the time of placing information about the vessel on the site and are periodically updated in the future. Exact parameters and characteristics can be provided at the request of the buyer and are specified in the sales contract. All information provided regarding prices, condition, technical characteristics and / or the possibility of operating yachts on the water is for informational purposes and is not a public offer.

# Princess Y85

YACHTS FOR SALE

LOA:  
**26.20 m**

YEAR:  
**2020**

ASKING PRICE:  
**€ 4,999,000**  
EXCL. VAT

## > SPECIFICATIONS

### INTERIOR FURNITURE

- Walnut interior wood Satin finish (galley & wheelhouse floors are walnut as standard)
- Saloon & Dining area floors to be in planked wood not V Groove with inlaid rug \* in aft saloon area (wood type same as galley & wheelhouse)

### LAYOUT

- Starboard cabin to have double berth conversion with powered sliding mechanism on inboard berth
- Starboard cabin to have additional fold-down (pullman) berth on inboard side
- Additional high level berth in captain's cabin including individual reading light
- Master stateroom to have sofa with storage in place of occasional table with seats
- Bidet in Master Stateroom bathroom
- Barstools at galley bar (2)

### NAVIGATION

- Additional Raymarine Axiom XL 19" brilliant color multifunction display at upper helm with Rank -10 remote control
- Raymarine Magnum HD colour radar, 12kW pedestal with 48" open array scanner in place of 4kW

- Raymarine AIS Class B transponder interfaced with chartplotter & with 8ft (2.4m) aerial
- International VHF

### ADDITIONAL OPTIONS

- Williams Tender 435
- 4 underwater lights (2 for each side)

### DECK EQUIPMENT

- GRP flybridge hardtop including lighting (with scene selection) is finished in White gelcoat with Oyster Grey metallic legs
- Third station controls in cockpit (engine controls, thruster controls and engine and emergency stops)
- Cockpit servery unit (includes top loading coolbox (100ltrs) and storage cupboard)
- Side entry gates to aft port & starboard side decks in addition to standard passerelle
- Electric drop window to dinig area
- Electrically operated sun awning to aft end of hardtop in Charcoal Grey mesh
- Paserelle to be wired via the master switch in addition to its own switch
- Stainless steel keyway plates and slider sysytem for later fitting of tender on bathing platform

The company is not responsible for the accuracy of the information provided by the Owner (images, yacht specification, list of installed equipment, its status, engine hours, legal issues). The engine hours are indicated at the time of placing information about the vessel on the site and are periodically updated in the future. Exact parameters and characteristics can be provided at the request of the buyer and are specified in the sales contract. All information provided regarding prices, condition, technical characteristics and / or the possibility of operating yachts on the water is for informational purposes and is not a public offer.



# Princess Y85

YACHTS FOR SALE

LOA:  
**26.20 m**

YEAR:  
**2020**

ASKING PRICE:  
**€ 4,999,000**  
EXCL. VAT

## > SPECIFICATIONS

- Kettal Zigzag coffee table (with tray and deck mounted fixing point) foredeck
- 2 x bar stools fitted at flybridge bar
- Plug in carbon pole transom shower and deck socket to bathing platform
- Detachable bathing ladder with deck mount sockets to bathing platform
- Prepare for later fitting of flybridge crane to include fitting of canopy structural stiffening and concealed copex below deck

### ELECTRICAL

- Multi sockets in place of standard sockets (throughout craft) "please note that as these sockets will take various plug types it is the customers' responsibility to ensure that the appliance being plugged in matches the boats operating voltage. PYI cannot be held liable for equipment damage that results from a mismatch of voltages"
- Freshwater maker (190 litres/hour) complete with remote instrumentation and service/spares kit (cannot be ordered with Spot zero option)
- Lava Brick BBQ in place of standard and additional Lava Brick BBQ to flybridge wetbar (2 in total)
- Underwater transom lights (4 LUMISHORE SMX52 White)
- Underwater lighting to aft hull sides (8 LUMISHORE SMX52 White)
- Underfloor heating in Master Stateroom Bathroom
- Please note that shower areas are not included
- Additional washer/ dryer machine located in guest lobby area
- Icemaker fitted in flybridge

- Miele wine cooler (34 bottle) fitted in galley (replaces inboard drawer unit)
- Lavazza coffee machine located in galley with custom integrated base
- Exterior lighting upgrade package
- Included linear LED x1 and fibre optiov x14 lighting to the cockpit pelmet and headlinning and low level LED DECK LIGHTING X28
- Exterior decorative lighting upgrade
- Decorative chargeable LED lanterns x1 dimmable and portable
- Interior lighting upgrade package
- Additional fibre optics (x16 TO SALOON AND DINING AREA)

### EXTERIOR UPHOLSTERY / CANVAS / COVERS

- Foredeck cubby seat and sinbed upholstery in Comfort Exterior II with contrast piping Colour to be confirmed
- Cockpit & flybridge upholstery – seating & helm seats – Comfort Exterior II with contrast piping – colour to confirmed
- Exterior covers
- Flybridge Grey Sunbrella Supreme
- Cockpit Grey Sunbrella Plus
- Foredeck sun awning with four carbon fibre poles (Anthracite Grey fabric) and deck mounting sockets
- Aft flybridge sun awning with four carbon fibre poles and deck mounting sockets – Anthracite Fabric

The company is not responsible for the accuracy of the information provided by the Owner (images, yacht specification, list of installed equipment, its status, engine hours, legal issues). The engine hours are indicated at the time of placing information about the vessel on the site and are periodically updated in the future. Exact parameters and characteristics can be provided at the request of the buyer and are specified in the sales contract. All information provided regarding prices, condition, technical characteristics and / or the possibility of operating yachts on the water is for informational purposes and is not a public offer.

# Princess Y85

YACHTS FOR SALE

LOA:  
**26.20 m**

YEAR:  
**2020**

ASKING PRICE:  
**€ 4,999,000**  
EXCL. VAT

## > SPECIFICATIONS

### AUDIO VISUAL & COMMUNICATIONS

- Cockpit seating area to have 32" exterior TV on hinge down mechanism

### PREMIUM AUDIO/VIDEO UPGRADE

- Deck Saloon – 55" UHD Smart LED TV on a power lift. Naim Uniti Star audio system – Stream your music in high-resolution, play, backup your CDs, store and access your music library or tune in to your favourite radio stations. Access a world of music with a host of streaming and media sources with intuitive app enabled features. Blu-ray UHD CD/DVD player with Focal speakers (4) and subwoofer.
- Owner's Stateroom – 55" UHD LED TV, Naim Uniti Atom audio system with Bluetooth, multi-zone streaming capability and dedicated app. Bluray UHD CD/DVD player. Paired with Focal 300 ICW6 speakers and 1 Focal Cub Evo subwoofer. (speakers located in the head TBC)
- Forward Guest Cabin – 32" HD Smart LED TV, Naim Uniti Atom, audio system with Bluetooth, multi-zone streaming capability and dedicated app. Blu-ray CD/DVD player. Paired with 2 Focal 300 ICW6 speakers and 1 Focal Cub Evo subwoofer.
- Starboard guest cabin – 28" HD LED TV, Naim Uniti Atom audio system with Bluetooth, multizone streaming capability and dedicated app. Blu-ray CD/DVD player. Paired with 2 Focal 300 ICW6 speakers
- Port guest cabin – 32" 'Magic Mirror' TV, Naim Uniti Atom audio system with Bluetooth, multi-zone streaming capability and dedicated app. Blu-ray CD/DVD player. Paired with 2 Focal 300 ICW6 speakers
- Crew Mess area – 28" HD LED TV, Naim Uniti Atom audio system with Bluetooth, multizone streaming capability and dedicated app. Blu-ray CD/DVD player. Paired with 2 Focal 300 ICW6 speakers
- Flybridge – Naim Uniti Atom audio system with Bluetooth, multi-zone streaming capability and dedicated app. Paired with 4 Bowers and Wilkins Marine 6 waterproof speakers and subwoofer (no HDMI connectivity)
- Cockpit seating area – Naim audio Uniti Atom system with Bluetooth, multi-zone streaming capability and dedicated app. Paired with 2 Bowers and Wilkins Marine 6 waterproof speakers (no HDMI connectivity)
- Foredeck seating walk-through area – Naim Uniti Atom audio system with Bluetooth, multi-zone streaming capability and dedicated app. Paired with Bowers and Wilkins waterproof speakers (2) (no HDMI connectivity)
- 1 x 256GB SD Card
- On board Ethernet network and 4G internet capability
- On board WIFI network incorporating external WIFI and 3G/4G antenna for extended range. Enabling connectivity to onshore WIFI networks throughout the vessel including crew and external guest areas. (Mobile internet connectivity requires an activated mobile data SIM card)
- Internal telephone system with PBX exchange with handsets in all cabins (including port crew cabin) and at lower helm position
- KVH (TV6) Tracvision – within a 60cm dome (linked to saloon TV)
- Dummy KVH dome (60 cms)

The company is not responsible for the accuracy of the information provided by the Owner (images, yacht specification, list of installed equipment, its status, engine hours, legal issues). The engine hours are indicated at the time of placing information about the vessel on the site and are periodically updated in the future. Exact parameters and characteristics can be provided at the request of the buyer and are specified in the sales contract. All information provided regarding prices, condition, technical characteristics and / or the possibility of operating yachts on the water is for informational purposes and is not a public offer.



# Princess Y85

YACHTS FOR SALE

LOA:  
**26.20 m**

YEAR:  
**2020**

ASKING PRICE:  
**€ 4,999,000**  
EXCL. VAT

## > SPECIFICATIONS

- Satellite TV detectors (common interface) in Saloon, Master, Forward, Port, Starboard and crew mess (Decoders are required with each television if different channels are to be required at the same time)

### FABRICS AND COLOR SCHEME UPGRADE

- Supply 9 frag ponza dining chairs in place of standard
- Penta china 0308-00 medium lamp glossy white
- Porta romana bouble lamp clb11 with ceramic base eucalyptus glazed antique brown galley top main exterior upholstery met macadamia with met ice contrast
- Additional charge in respect of jacaranda carpet, rug, pouf, upholstery, square quilted blankets and lined

## › CONTACT INFORMATION

Nord Star Superyachts specializes in yacht sales, construction, management and consulting. We provide a full range of services for yacht owner support: legal assistance, technical survey, shipping, yacht registration, insurance and crew selection.



### **DENIS KHAMZATOV**

Head of Sales

+371 25 630 696

[dk@nordstarsuperyachts.com](mailto:dk@nordstarsuperyachts.com)

### **NORD STAR SUPERYACHTS**

Marventas d.o.o.

Tržaška cesta 2,

Ljubljana, 1000 Slovenia

+386 6 818 04 88

[info@nordstarsuperyachts.com](mailto:info@nordstarsuperyachts.com)

[www.nordstarsuperyachts.com](http://www.nordstarsuperyachts.com)