



## Princess 88MY

26.82 m > 2018 > Turkey

# Princess 88MY

LOA:  
**26.82 m**

YEAR:  
**2018**

ASKING PRICE:  
**€ 5 500 000**  
EXCL. VAT

YACHTS FOR SALE

## > ABOUT

Princess 88 MY is a 27 meter luxury motor yacht built by Princess Yachts in 2018. Exterior deck layouts offer greater flexibility for enjoying outdoor living. There is a lovely dining table on the main deck aft. On the foredeck, guests will find a large sunbathing area and a secluded seating area. The flybridge has an additional dining table, as well as a bar and sun loungers.

The interior features many social areas, including a spacious salon with sofas and armchairs, as well as a dining area. The interiors are very bright thanks to large panoramic windows on both sides of the yacht. Directly from the salon you can go out onto a folding balcony on the water. With a beam of 6.30 m the yacht is an excellent choice for long cruising.

Princess 88 MY is for sale in excellent condition and is available for viewing in Istanbul.

## KEY FEATURES:

- 2 x Seadoo Spark Trixx Jetski
- Williams Sportjet 460
- TRAC Fin Stabilizers
- VAT not paid

# Princess 88MY

LOA:  
**26.82 m**

YEAR:  
**2018**

ASKING PRICE:  
**€ 5 500 000**  
EXCL. VAT

YACHTS FOR SALE

## > SPECIFICATIONS

Type	Planning motor yacht	Engines	2 x MTU 12V 2000 M94, 1948HP
Builder	Princess Yachts, UK	Engine hours	200
Location	Turkey	Max. Speed	29-30 kn
Year	2018	Cruising speed	14-16 kn
Flag	TBD	Fuel tank	11 000 l
LOA	26.82 m	Water tank	1 500 l
Beam	6.30 m	Guests	8 persons
Draft	1.78 m	Crew	3 persons
GT	TBD	Guest accommodation	4 cabins
Hull	GRP	Crew accommodation	2 cabins
Superstructure	GRP	VAT	not paid
Deck	Teak	-	-

The company is not responsible for the accuracy of the information provided by the Owner (images, yacht specification, list of installed equipment, its status, engine hours, legal issues). The engine hours are indicated at the time of placing information about the vessel on the site and are periodically updated in the future. Exact parameters and characteristics can be provided at the request of the buyer and are specified in the sales contract. All information provided regarding prices, condition, technical characteristics and / or the possibility of operating yachts on the water is for informational purposes and is not a public offer.





FLYBRIDGE





FLYBRIDGE





2<sup>nd</sup> HELM STATION





FOREDECK





AFT DINING AREA





SALON



WHEEL HOUSE





GALLEY



MASTER CABIN





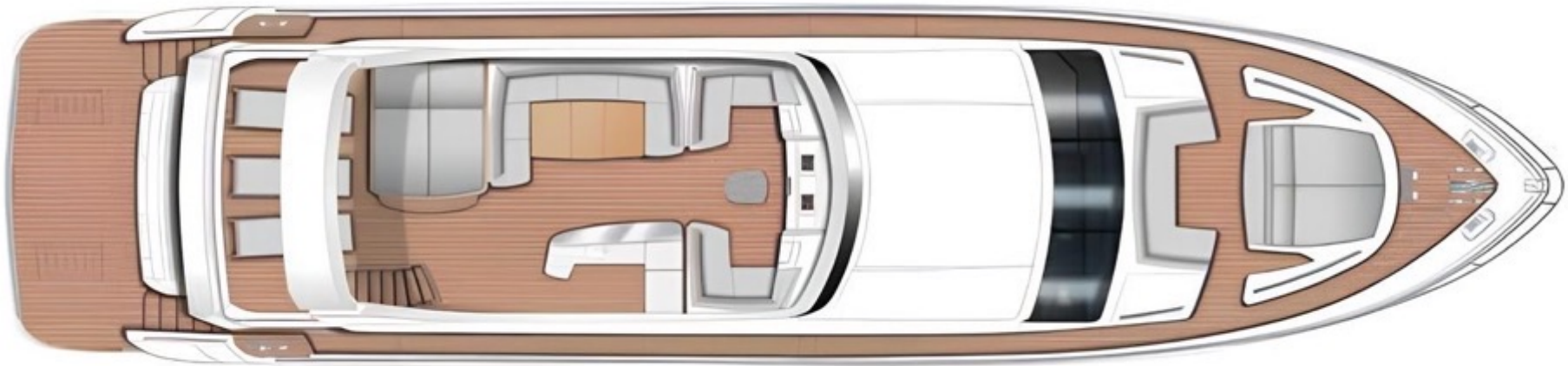
VIP GUEST CABIN



STARBOARD & PORTSIDE CABINS



> GENERAL ARRANGEMENT

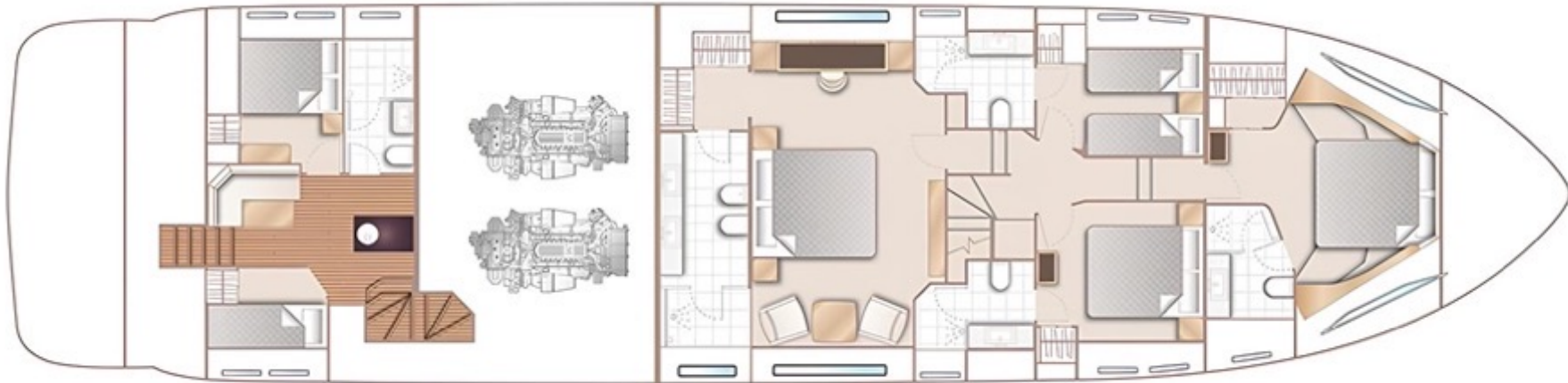


FLYBRIDGE



MAIN DECK

> GENERAL ARRANGEMENT



LOWER DECK



# Princess 88MY

YACHTS FOR SALE

LOA:  
**26.82 m**

YEAR:  
**2018**

ASKING PRICE:  
**€ 5 500 000**  
EXCL. VAT

## > SPECIFICATION

- Hydrostats for life rafts with slings
- Waterproof VHF radio Icom M23
- EPIRB Kannad safe link cat 1 Epirbe
- UV sterilizer and filter kit for cleaning and sterilizing the fresh water system in the main water tank.
- Spare water pump
- Raymarine GS95 in crew dining area
- Installation of increased heating of elements with an air-ducted air conditioning system for the possibility of individual heating in each room with a low sea water temperature
- Thermal imager (Night vision camera)
- Bow mooring lights
- Additional cameras (on the sides - forward / backward; stern; flybridge-survey)
- Kitchen bulkhead and doors
- Installation: go-ahead; walkie-talkies river; bow searchlight control;
- anchor chain sensor/counter - for two posts
- Increased instrument panel visor
- One-button toilet flush system
- Additional yacht control on the wire, entry/attachment point in the cockpit
- Fire extinguishing system - pump; pump, etc., etc. Additional noise insulation in the engine room
- Additional sound insulation around the perimeter
- TV on the flybridge (Installation on a support on the bar).
- Installation and connection of NTV+ satellite receivers manufactured by the Buyer x 8 pcs.
- Cabin - cabinet, surface torpedoes, for disclosure (sockets 2pcs)
- Sockets: Cabin - torpedo - over the assault table, in the middle 2 pcs; Behind the sofa - 2 pieces; aft navigation table 2pcs; box for plants 2pcs; captain's cabin - above the bedside table 2pcs; Stern box - inside 2 pieces in the middle
- Spot lighting of the floor - galley, wheelhouse
- Anchor chain washer (Sea water)
- Miele wine cooler in main deck lobby
- Replacement of a washing machine, in search of a ladder / ladder, in search of a deck, with a washing machine with scattered dryers (one drawer for household needs, for example, a laundry basket + a place for washing powders)
- Modified generator mounts for beautiful noise and vibration, affordable generators on the hull of the yacht
- Jacuzzi
- Additional amplifier connected to Bose speakers on the flybridge and in the cockpit
- NAVTEX system connected to the general system of the yacht
- Lavabrick instead of grill on flybridge
- Private screen - mesh instead of an awning on the aft part of the cockpit
- Sun awning mounted above the sofa in the bow of the vessel
- Sun awning mounted aft of the hard top on the flybridge

The company is not responsible for the accuracy of the information provided by the Owner (images, yacht specification, list of installed equipment, its status, engine hours, legal issues). The engine hours are indicated at the time of placing information about the vessel on the site and are periodically updated in the future. Exact parameters and characteristics can be provided at the request of the buyer and are specified in the sales contract. All information provided regarding prices, condition, technical characteristics and / or the possibility of operating yachts on the water is for informational purposes and is not a public offer.

# Princess 88MY

YACHTS FOR SALE

LOA:  
**26.82 m**

YEAR:  
**2018**

ASKING PRICE:  
**€ 5 500 000**  
EXCL. VAT

## > SPECIFICATION

- Set of mosquito nets for all portholes
- Spare pair of VEEM screws + spare shaft
- Insertion into the outboard pipeline of the desalination system for connection of the outboard water filtration system
- Installation of adjustable limiters on the stove in the kitchen
- Anchor swivel (2 @ 360 GBP each)
- Portable compressor for pumping fenders, stored in the stern locker, consisting of:
  - Fender feet made of leather, for bulwark installation
  - Case set
  - Waterproof outlets on the flybridge
  - Mosquito nets with a zipper in the aft awning
  - Navigation monitor in krumess
  - Extra bed in captain's cabin with separate reading lamp
  - Two stainless steel anchors instead of the standard galvanized ones (1 x 80kg and 1x 50kg)
- Mirror wide-angle night vision camera on the transom of the yacht, connected to the general CCTV system to view the bathing platform
- Additional waterproof 12V socket (cigarette lighter) on the steering console on the flybridge
- Installing an air conditioning fan coil with DC power instead of standard AC power to reduce noise from electric motors in the cabin
- Installation of a DC fan coil instead of standard AC to reduce noise from the electric motors in the Master Stateroom

- Additional soundproofing of all cabins on the lower deck, as well as the passage between cabins
- Installation of a 240V socket and USB in a side cabinet in the bow of the cabin

## INTERIOR

- Worktop in the kitchen - Antique Brown Granite
- Worktop Wetbarov - Perso Avorio Granite
- Non-standard stone for floors and work surfaces in bathrooms, as well as the manufacture of sinks from monolithic stone instead of standard stone and faience sinks
- Non-standard mosaic in the bathrooms of the cabins instead of the standard mosaic in accordance with Appendix No. 1 to this Appendix
- Custom Dornbrach sanitary ware instead of standard Samuel Heels sanitary ware

## Master-Cabin / Master cabin

- Installing a plank around the perimeter of the mirror at the junction with the mosaic in the bathroom of the Master Cabin
- Matting the glass of the shower in the bathroom of the Master cabin (the pattern is similar to the veins of marble) by glass etching
- Supply and installation of panels from Macassar on both sides of the bed in the Master cabin
- Delivery and installation of front panels from Makassar on drawers under the bed in the Master cabin

The company is not responsible for the accuracy of the information provided by the Owner (images, yacht specification, list of installed equipment, its status, engine hours, legal issues). The engine hours are indicated at the time of placing information about the vessel on the site and are periodically updated in the future. Exact parameters and characteristics can be provided at the request of the buyer and are specified in the sales contract. All information provided regarding prices, condition, technical characteristics and / or the possibility of operating yachts on the water is for informational purposes and is not a public offer.



# Princess 88MY

YACHTS FOR SALE

LOA:  
**26.82 m**

YEAR:  
**2018**

ASKING PRICE:  
**€ 5 500 000**  
EXCL. VAT

## > SPECIFICATION

- Delivery and installation of front panels from Makassar on the drawers of the nightstands next to the bed in the Master cabin
- Delivery and installation of front panels from Makassar on the doors of the dressing table in the Master cabin
- Bedside cabinet surfaces without leather upholstery
- Manufacture and installation of a headboard in the Master cabin, upholstered to the ceiling, Upholstery (individual design, with 10" diamond cells) from - NOVASUEDE SAFARI T3D8W
- Upholstery of ceiling panels in the master cabin with NOVASUEDE SAFARI T3D8W
- Removal, painting in Alcantara ceiling color and installation of decorative inserts in the ceiling panels in the Master cabin
- Roman blinds with blackout lining in the Master cabin from - GENT BIANCO TB056-618 (Armani Casa)
- Stitched bedspread with bed lining in Master Stateroom, Rhombus Embroidery Design stitching, 10" of - TABALARASA 135 NACRE (Dedar)
- Carpet in master cabin Fendi Nilo collection Bamboo Fiber Taupe
- Upholstery of the side of the bed in the Master cabin with FENDI MARYLAND 344 (Fendi)
- Starboard corner chairs Master cabin chairs X 2 - Amy Somerville Floradora upholstered in - FENDI AIACE TOP 551 (fendi)
- Dressing table in master cabin upholstered in MARYLAND 348 (Fendi) with insert in Trench Primasuede
- Individual design chair at the dressing table upholstered in MARYLAND 344 (Fendi)
- Delivery and installation on the bulkhead at the head of the bed Master cabin lamps Porto Romana Baby LartigueTWL75
- Supply and installation of a table lamp Porto Romana small Lartigue lamp GLB14S aft of the master cabin vanity
- Installation in the Master cabin of two reading lamps integrated into the bedside tables on a flexible metal leg (one on each side) with the appropriate modification of the bedside tables

### FWD Cabin

- Manufacture and installation of an individual design rounded headboard with 10" diamonds in the forward cabin made of NOVASUEDE SAND - T3E1W
- Frontal surfaces of side pedestals under the portholes and bedside "bedside tables" in the bow cabin with Macassar insert
- Production and installation of vertical inserts from Makassar Ebony in the head of the bow cabin bed on both sides
- Manufacture and installation of the front surfaces of the drawers of the bow cabin bed from Makassar Ebony
- Manufacture and replacement of the front surfaces of bedside tables on Makassar Ebony
- Production and varnishing of the upper surfaces of walnut bedside tables

The company is not responsible for the accuracy of the information provided by the Owner (images, yacht specification, list of installed equipment, its status, engine hours, legal issues). The engine hours are indicated at the time of placing information about the vessel on the site and are periodically updated in the future. Exact parameters and characteristics can be provided at the request of the buyer and are specified in the sales contract. All information provided regarding prices, condition, technical characteristics and / or the possibility of operating yachts on the water is for informational purposes and is not a public offer.

# Princess 88MY

YACHTS FOR SALE

LOA:  
**26.82 m**

YEAR:  
**2018**

ASKING PRICE:  
**€ 5 500 000**  
EXCL. VAT

## > SPECIFICATION

- Roman blinds in bow cabin with opaque lining made of - 068 NEW DAWN BACKED B068-43 (BRUNO TRIPLET SAHCO)
- Stitched bedspread with lining for the bed in the Forward Cabin, Rhombus Embroidery Design stitching, 10" from - APLOMB COL 5 MASTICE - Dedar
- Dressing table for the bow cabin covered in MARYLAND 348 (Fendi) and insert in Trench Primasuede Dressing table in the bow cabin - MARYLAND 344 (Fendi)
- Upholstery of ceiling panels in the bow cabin with NOVASUEDE SAFARI
- Dismantling, painting in the color of the ceiling panels, and installing back decorative strips in the ceiling of the Forward Cabin
- FENDI MARYLAND 344 (Fendi) bed upholstery in bow cabin
- Delivery and installation on the bulkhead at the head of the bed of the forward cabin of Porto Romana Baby LartigueTWL75 lamps
- Installation in the forward cabin of two reading lamps integrated into the bedside tables on a flexible metal leg (one on each side)
- Safe for A4 documents in the bow cabin instead of the standard one and in the crew cabin

### STBD Cabin

- Roman blinds with blackout lining - 105 OYSTER B105-04 - (BRUNO TRIPLET SAHCO) (Dedar)
- Quilted, Lined Bedspread, Rhombus Embroidery Design Stitch, 10" in Fabric - APLOMB COL 04 BEIGE
- Upholstery of the inner bulkhead of the starboard cabin in PRO PARFAIT 554-3803 (Ultraleather)
- Installation in the right cabin of two reading lamps integrated into the bedside tables on a flexible metal leg (one on each side)
- Headboard made of - PRO PARFAIT 554-3803 (Ultraleather) in right and left cabins

### Port Cabin / Left Cabin

- Roman blinds with opaque lining - ALAYA PLATINO T15024/003 (Dedar)
- Quilted, lined bedspread, Rhombus Embroidery Design stitching, 10" in fabric - TABALARASA 137 LINO (Dedar)
- Headboard - PRO PARFAIT 554-3803 (Ultraleather)
- Upholstery of the inner bulkhead of the port side cabin in PRO PARFAIT 554-3803 (Ultraleather)



# Princess 88MY

YACHTS FOR SALE

LOA:  
**26.82 m**

YEAR:  
**2018**

ASKING PRICE:  
**€ 5 500 000**  
EXCL. VAT

## > SPECIFICATION

### Salon

- Production and installation of the right pedestal in the salon, including a TV pedestal from Macassar
- Installation of Luxury 88" TV mirror TV - Ultra HD 4K, Smart TV, 1300 Hz, 3 x HDMI, YUV, Ethernet, 2 x USB, custom made without frame, on the bow bulkhead in the dining area, the back panel is upholstered with Ultra-leather Original 291-3609
- Delivery and installation of the Anthem MRX 720 7.2 home theater system with Keff speakers to provide independent high-quality sound and allow you to show a synchronous image on two TVs in the salon and dining area
- Production and installation of ceiling panels in the salon with the installation of contrasting strips, repeating the cutouts in the floor under the carpet, burnished from polished ebony, flush with the ceiling panels, including the insertion of ceiling lights
- Sofas in the saloon of the yacht to order, sofa design and materials - Fendi
- Interior installation of decorative GLB17 Crystal Strata table lamps including 18" oval Dove Satin lampshade
- Coating wooden floors in saloon, helm station and galley with non-slip varnish
- Installation of ceiling panels in the dining area with the installation of contrasting strips, repeating the cutouts in the floor under the carpet, burnished from polished ebony
- Manufacture of a custom design coffee table in Makassar Ebony on stainless steel legs with integrated poufs (4 x small poufs for the coffee table in the saloon - framing upholstery in BENTLEY HOME CADDY TOP 2111, top upholstery in top/seat upholstery AIACE TOP 878
- Installation of a stern bollard in walnut with front panels in Makassar Ebony on the port side in the Salon next to the sofa, repeating the rounding of the sofa
- Manufacture and installation of a chest of drawers in walnut with a Makassar Ebony front panel on the port side in the Salon between the sofas
- Wall panel in dining area upholstered in Ultra Leather Original 291-3609
- Manufacture and installation of front panels from Makassar Ebony in doors and chest of drawers in the salon
- Manufacture and installation of front panels from Makassar Ebony in doors and chest of drawers in the dining area
- Upholstery of ceiling panels in saloon and dining area in NOVASUEDE SAFARI T3D8W
- Two carpet inserts (carpet flush with wood floor) - RAJGARH DUSKY GRAY
- Carpet in lower rooms, cabins and stairs to lower rooms - JACARANDA HEAVY VELVET PEARL
- Roman blinds in salon and dining area without blackout - APLOMB COL 05 MASTICE (Dedar)

The company is not responsible for the accuracy of the information provided by the Owner (images, yacht specification, list of installed equipment, its status, engine hours, legal issues). The engine hours are indicated at the time of placing information about the vessel on the site and are periodically updated in the future. Exact parameters and characteristics can be provided at the request of the buyer and are specified in the sales contract. All information provided regarding prices, condition, technical characteristics and / or the possibility of operating yachts on the water is for informational purposes and is not a public offer.

# Princess 88MY

YACHTS FOR SALE

LOA:  
**26.82 m**

YEAR:  
**2018**

ASKING PRICE:  
**€ 5 500 000**  
EXCL. VAT

## > SPECIFICATION

- Patio door curtain (aft door of saloon and dining area) made with opaque lining - 105 NEW DAWN B105-01 (BRUNO TRIPLET SAHCO)
- Armchair Fendi Efea upholstered on the outside in BENTLEY HOME CADDY TOP 2111 (Fendi), upholstered seats and cushions (inside) - AIACE TOP 878 (Fendi)
- Dining chairs - Davidson Austin Bespoke X 8 pcs. Back with five buttons upholstered in back - MARYLAND 344 (Fendi)
- Port side sofa upholstery in BENTLEY HOME CADDY TOP 2111 (Fendi)
- Floor in saloon and dining area in black wenge instead of standard carpet
- Finishing the wood walnut floors in the kitchen and helm station with a dark lacquer to match the flooring in the saloon and lobby in black wenge
- Painting of front doors and cabinet panels in RAL 1013 PERLWIES

## EXTERIOR

- External upholstery - Flybridge helmsman seat, sun loungers, bow loungers and sofa - Met Taupe
- Flybridge and cockpit sofa upholstery - T14014/001 Cabas (Dedar)
- Two Kettal Maia cockpit chairs with white base and light weave
- Decorative pillows and blankets in accordance with the attached diagram

## TENDER, etc.

- Williams Sportjet 460
- 2 x Seadoo Spark Trixx Jetski 2up 900 HO IBR



## › CONTACT INFORMATION

Nord Star Superyachts specializes in yacht sales, construction, management and consulting. We provide a full range of services for yacht owner support: legal assistance, technical survey, shipping, yacht registration, insurance and crew selection.



### **MAKSIM EZHOV**

Sales Broker

+90 531 513 57 45

[me@nordstarsuperyachts.com](mailto:me@nordstarsuperyachts.com)

### **NORD STAR SUPERYACHTS**

Marventas d.o.o.

Tržaška cesta 2,

Ljubljana, 1000 Slovenia

+386 6 818 04 88

[info@nordstarsuperyachts.com](mailto:info@nordstarsuperyachts.com)

[www.nordstarsuperyachts.com](http://www.nordstarsuperyachts.com)