



## Sirena 58

18.58 m > 2024 > Turkey

# Sirena 58

LOA:  
**18.58 m**

YEAR:  
**2024**

ASKING PRICE:  
**€ 1 530 000**  
EXCL. VAT

YACHTS FOR SALE

## > ABOUT

Nord Star Superyachts is glad to present the new Sirena 58. The motor yacht will be launched in August 2024.

The Sirena 58 is a yacht that delivers a refined experience for owners that understand what they want. The design has a timeless look, with clean, shippy lines, and offers efficient performance at a range of speeds that add cruising versatility — go for an afternoon, a weekend, or a week. The seakindly ride and comfort features will make even the most sophisticated guests want to spend more time aboard, enjoying the fine craftsmanship and amenities as they cruise from port to anchorage.

The volume of the hull is quite large for her LOA, and lets the yard use the available space to create a more open layout than is common on a boat of this size, with lines of sight and headroom to reflect that of a much larger yacht. The result is a combination of clean lines and airy spaces that helps to focus the mind and as it relaxes the body.

The luxurious amidships master uses the full beam for excellent space and ample stowage, while natural veneers, high-quality fittings, and fine fabrics complement world-class craftsmanship and design. Large exterior deck spaces on the foredeck and flying bridge allow for friends and family to gather freely to enjoy panoramic views and cooling sea breezes.

Please contact us to receive the detailed specification and to book an inspection.

## KEY FEATURES:

- New yacht
- 3 guest cabins
- VAT not paid
- GRP hull

# Sirena 58

LOA:  
**18.58 m**

YEAR:  
**2024**

ASKING PRICE:  
**€ 1 530 000**  
EXCL. VAT

YACHTS FOR SALE

## > SPECIFICATIONS

Type	Semi-displacement motor yacht	Engines	2 x Volvo Penta D11, 670HP
Builder	Sirena Yachts	Engine hours	-
Location	Turkey	Max. Speed	25 kn
Year	2024 (NEW)	Cruising speed	16 kn
Flag	TBA	Economy cruising speed	10 kn
LOA	18.58 m	Range 10 kn (incl. 10% Reservoir)	850 nm
Beam	5.36 m	Fuel tank	3600 l
Draft	1.24 m	Water tank	800 l
Displacement	34.5 t	Black Water Tank	450 l
Hull	GRP	Gray Water Tank	225 l
Superstructure	GRP	Guests	6 persons in 3 cabins
Deck	Teak	Crew	1 person in 1 cabin

The company is not responsible for the accuracy of the information provided by the Owner (images, yacht specification, list of installed equipment, its status, engine hours, legal issues). The engine hours are indicated at the time of placing information about the vessel on the site and are periodically updated in the future. Exact parameters and characteristics can be provided at the request of the buyer and are specified in the sales contract. All information provided regarding prices, condition, technical characteristics and / or the possibility of operating yachts on the water is for informational purposes and is not a public offer.



EXTERIOR

FOREDECK







AFT COCKPIT



FLYBRIDGE





MAIN SALOON





MAIN SALOON



WHEEL HOUSE

GALLEY







MASTER CABIN



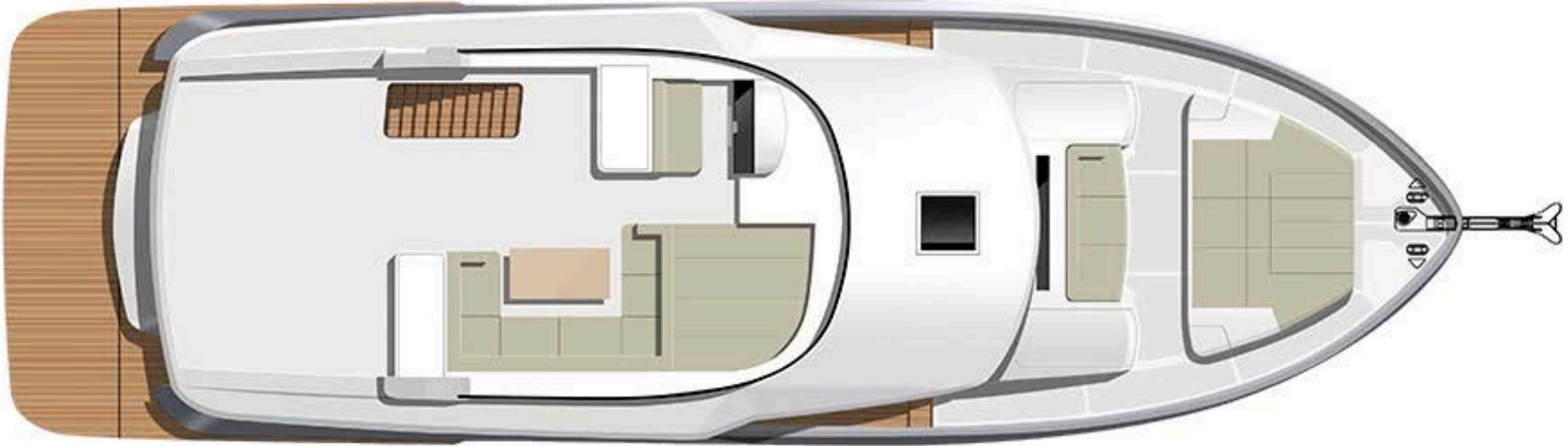
TWIN GUEST CABIN

DOUBLE GUEST CABIN

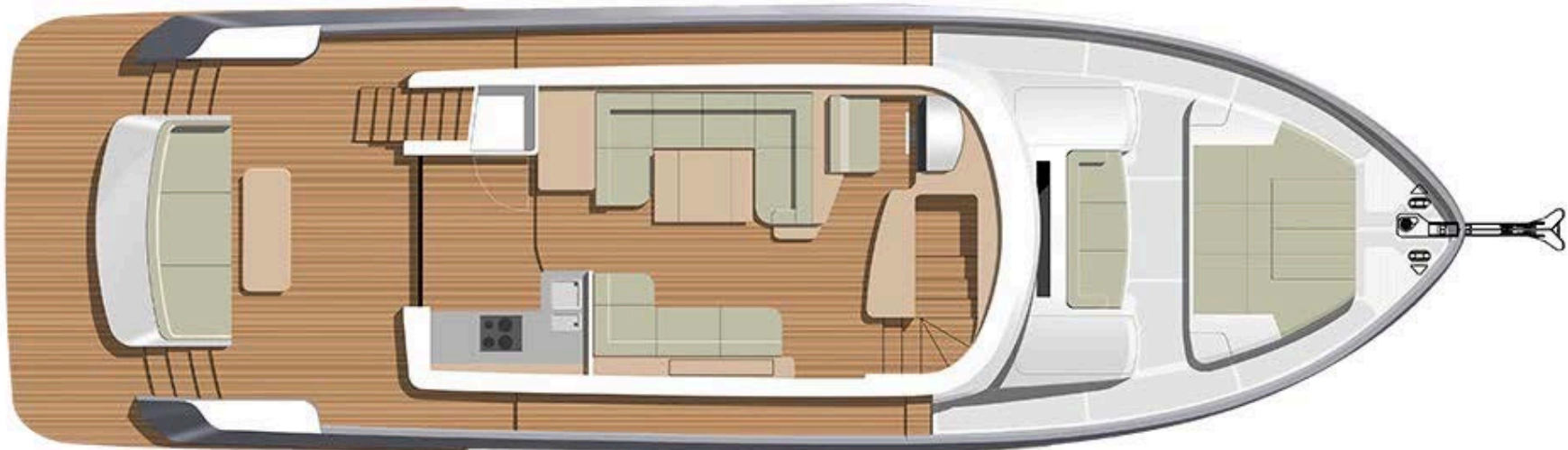




> GENERAL ARRANGEMENT

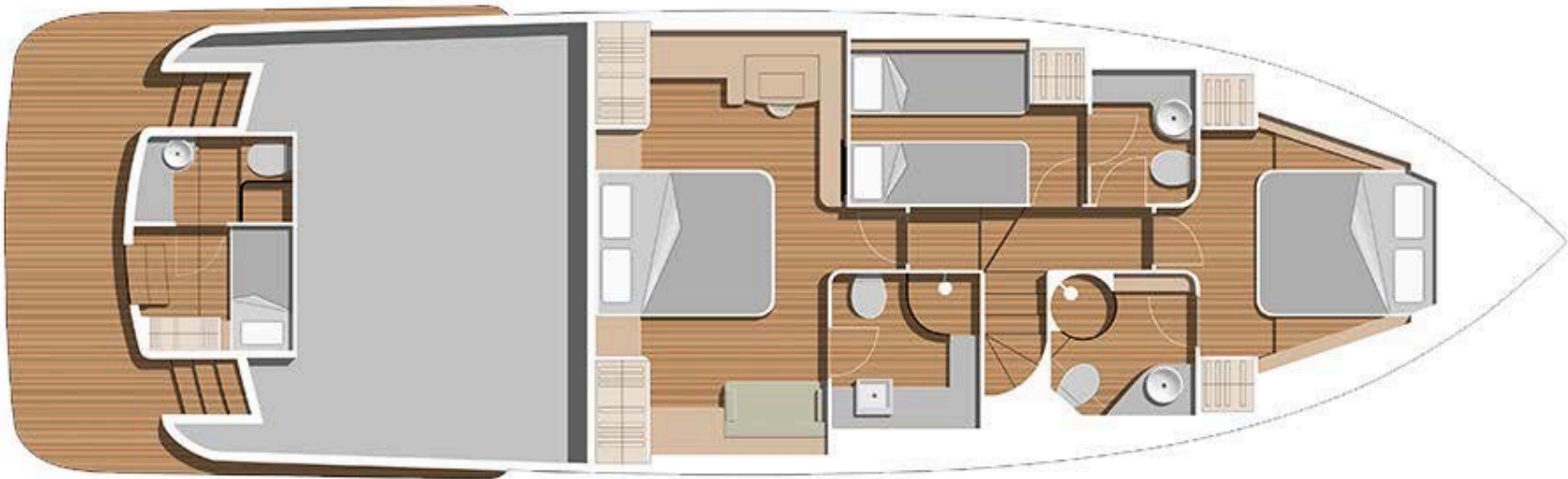


FLYBRIDGE



MAIN DECK

> GENERAL ARRANGEMENT



LOWER DECK



# Sirena 58

LOA:  
**18.58 m**

YEAR:  
**2024**

ASKING PRICE:  
**€ 1 530 000**  
EXCL. VAT

YACHTS FOR SALE

## > TECHNICAL EQUIPMENT

- Engines: 2 x Volvo D11 670 hp
- Generator Onan 1 x 17.5 kW
- HUMPHREE Stabilizers
- Solar batteries (12x192W) + lithium batteries (6x200Ah Viction 24V with charger and inverter 2x3000W)
- Air conditioner
- Third helm station in cockpit
- 3 joysticks (lounge, flybridge, cockpit) for controlling engines and thrusters
- Bow and stern thrusters
- Preparing to install Starlink
- Preparing to install a desalination plant
- Fresh water deck washing system
- Racor Single Stage Fuel Filter
- Glendenning Shore Power Cable Stranding System
- Cable Master CM7
- Garmin electronics package: 4 x 12" chartplotters, 4kW HD open radar
- Garmin IP camera in engine bay and flybridge
- Carbon hardtop
- Covers for seats, sunbeds and tables on the flybridge
- Covers for seats and tables on the main deck
- Summer cockpit awning
- Winter cockpit awning
- Black mesh for windows
- Telescopic retractable ladder 4 meters long

Hydraulic swim platform  
Teak decking on flybridge and bow deck  
Four recessed retractable lights on foredeck  
Three floodlights aft of the flybridge  
Keel blocks for tender  
Two electric winches on the cockpit  
BBQ in the wet bar on the flybridge  
Refrigerator in wet bar on flybridge  
Fixed cockpit table with teak top  
Crew cabin with single bed and bathroom  
Side door in the salon  
Table with electric telescopic leg and additional pillow, transformable into a berth, in the salon  
Portholes (opening) in the master cabin  
Dishwasher MIELE  
MIELE washer-dryer  
2 individual reading lights in each cabin  
Safe in master cabin  
Toilets with built-in bidet  
Mosquito nets for all portholes  
Preparation for 50" TV in the salon  
Fusion RA70 Music System  
Gas grill on flybridge



## > CONTACT INFORMATION

Nord Star Superyachts specializes in yacht sales, construction, management and consulting. We provide a full range of services for yacht owner support: legal assistance, technical survey, shipping, yacht registration, insurance and crew selection.



### **VLADIMIR GALKO**

Sales Broker

+357 99 656930

vg@marventas.si

### **NORD STAR SUPERYACHTS**

Marventas d.o.o.

Tržaška cesta 2,

Ljubljana, 1000 Slovenia

+386 6 818 04 88

info@nordstarsuperyachts.com

www.nordstarsuperyachts.com